

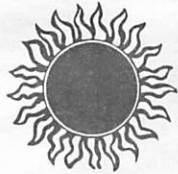


WHEELING WHEELMEN

P.O. BOX 581-D
WHEELING, ILLINOIS 60090

MONTHLY MEANDERS

AUGUST, 1933



AUGUST MEETING

Wednesday, August 2
7:30 p.m.



Forest View High School
2121 S. Goebbert Road
Arlington Heights

Use field house entrance to the cafeteria.
(Temporary change. Asbestos removal at Wheeling High School.)



PROGRAM: BICYCLING IN ENGLAND
BY MIKE MILTON

Mike loved bicycling in England.
Come and share his memories!

Thank You, Linda

Linda Svrcek did a great job stepping in to put out our July newsletter so I could drive Sag for PEDAL FOR POWER. The excellent results of her efforts is very much appreciated!

Phyllis Harmon

Pennsylvania Next Year?

Al Berman and Fran Green would like to lead a one week trip to the northeast portion of Pennsylvania which is fairly remote. It is in a state forest area. Scenery is beautiful, roads are excellent and there are some very old country inns that have excellent food. This would include some beautiful hiking as well as rafting on Pine Creek.

If interested, contact Fran or Alan at 541-9248. A final tally of interested people will be taken at the August meeting.

THE PREZ SEZ

Weather-wise, this year has been pretty good for maximum bicycle riding. Despite some crazy days here and there (snow in May, and 101° on July 10), the summer has been cool and dry. Whenever we return to a year with more normal rainfall, we all will be spending some weekends looking out the window.

HEY! Support your local bike shop!! That's right! We have some very good shops in the area that provide the club and its members with excellent service and technical support. These shops provide donations for door prizes and help out at Harmon Hundred time. I find their pricing for accessories and clothing is fairly competitive with the mail order houses when you take into account all costs (minimum order level and shipping charges). We urge you to take advantage of that wonderful resource and patronize the bike shops whenever you can.

The club picnic is coming up on August 12. It promises to be lots of fun. Al Berman and Fran Green have volunteered to run it this year. Bring \$3.00 per person to Potawatomi Woods. Details elsewhere in this newsletter. You'll enjoy the day!

Harmon Hundred Volunteer Party

All the volunteer workers for our big September 10 invitational will be invited to a pizza party Friday, September 15 - details in September newsletter.

All volunteers are guests. Anyone else will be charged \$5 for refreshments.

Update On The Russells

Jack is still working in Tulsa, so they bought a home at 17150 Redbud Drive, Catoosa, OK 74015.

July 18 Lilian flew to Polynesia where her mother is terminally ill. She'll return August 12.

Jack and Lilian plan to participate in the September Kentucky tour and Lilian again will be chairman for our November Banquet.

Potawatomi Woods Picnic

August 12 at 10 a.m. we'll ride to Lamb's Farm and back in time for a Bar-B-Q picnic lunch. Bring your \$3.00 for lunch but be sure to phone Al Berman or Fran Green at 541-9248 to let them know you'll be there... after all, we do have to know how much food to buy!

Also, if you have a Bar-B-Q grill you can bring or a cooler, please call Al or Fran. We could use several.

Volunteer for Harmon Hundred?

Volunteered for HARMON HUNDRED yet? Call Duane Regenfuss-878-2363 to learn where help is needed. I could use more people for Registration and Pre-Registration. Literally that is the hub of the Harmon Hundred. We work in shifts from 5:30 a.m. through 7 p.m. So call me, Phyllis Harmon, at 537-1268 and let me know your time preference.

Mathisons Retire To North Carolina

George and Marilyn Mathison found that Hendersonville, North Carolina, was perfect for retirement because it could provide for their church, bicycling and square dancing needs. So they put their house on the market and looked forward to one final summer of bicycling with the Wheeling Wheelmen. But, their home sold in two days!

The Mathisons and Muffin moved in mid-July and until they find a house to buy are at: Big Willow Camp Ground Rt. 13, Box 296, Hendersonville NC 28739.

President:	Hans Predel	255-4029
Vice-Pres:	Aaron Tanzer	323-3204
Treasurer:	Andy Dane	271-0808
Safety:	Keith Kingbay	459-8242
Membership:	Geri McPheron	824-5091
Editor:	Phyllis Harmon	537-1268
For check out:		
Bike Books:	Pat Marshall	564-0346
Bike Tools:	Chet Tobolski	362-7794

Wheeling Wheelmen phone 989-7373



by Keith Kingbay

WE HAVE MET THE ENEMY AND THEY IS US

I'm not sure if the quotation from General Abner T. Cornpone is correct militarily, but it certainly is from a cyclist's point of view.

Surely everyone must be aware of the recent column by Mike Royko and, only a few days before, I am confident many of you saw the column by Dear Abby.

Both columns were devoted to the thoughtless riders among us and the reactions of motorists. One can, with only a little reflection, imagine how non-cycling motorists react to some of our fellow cyclists. I know how I felt as outlined in a recent letter sent to all of the area clubs when a group of cyclists assaulted me both verbally and with hand signals. Evidently they had a limited vocabulary since any normal person could have made a much more persuasive argument with better language.

Royko's column, which was as is usual in his writings extremely vitriolic, became a cause celebre with a number of talk shows. I am with all sincerity frightened, and I truly mean this, by the attitudes expressed by many of the callers. Trying to outlaw bicycle riding on public roads was, perhaps, the mildest of their expressions. Riding bicyclists into ditches or riding over them were common phrases. What is frightening is the the crazies read these columns or hear these talk shows and get goofy ideas. One talk show host (nut) actually encouraged the callers. This was on WLS (89 on the dial).

I have always advocated staying on the right side of the road, stopping for stop signs, not running red lights, but we must be now more careful than ever.

I am not sure what our rights will be if we are in the right, however, certainly we should think of Royko's and the talk show hosts leagl responsibilities if some nut goes off the deep end.

One talk show host was on our side, unfortunately I didn't hear him: Ed Curran. I feel sure he rides with some of our people and I hope that someone will extend the thanks of the cycling fraternity for his kind words.

Comment Corner

WALKMANS

Under F.Y.I. in the July issue of *Monthly Meanders* it stated that the WW Board recently voted to ban the use of radio headsets (i.e. Walkmans) on club rides. I personally have a problem with this ban for several reasons. Primarily, it sets a precedent! If we're going to establish "bans", we shouldn't stop at radio headsets. How about also considering:

cassette players cellular phones
portable computers assault weapons
musical instruments
pipes, cigars, cigarettes
controlled substances
tee-shirts with tasteless, vulgar words or phrases
helmets on the back rack
handlebars turned backwards with bar ends pointing up

This may sound slightly ludicrous, and is! However, I fail to see why the Wheeling Wheelmen board saw fit to ban radio headsets ("No ride man, if you bring a Walkman!) but refuses to address the issue of requiring helmets on club rides and invitations. I only hear the lame argument "Well, I've ridden x years without a helmet and nothing's ever happened!" Well, Ardie and I have each had biking accidents where our brains would have likely been scrambled without the protection of a helmet. To me, the anti-helmet arguments are analogous to those denying the smoking link to lung cancer and the life-saving abilities of seat belts in autos. Do they also believe the earth is flat? No true cyclist believes that!

Dick Sorenson

Our club is not the only club, state or national organization concerned with the Walkman. With ears plugged the rider cannot hear cars approaching or calls of "Car back" or "passing". Ride leaders are very concerned. Ed.

MAIL ORDER CATALOGS

For years I have heard complaints from the bicycle industry and bike shops about the bicycle mail order houses. Since I have lived in the Chicagoland area all my life, with numerous bicycle shops in the area, I could understand. But, in driving the sag van for Pedal For Power, I discovered the other side of the problem.

We went through town after town that had no bicycle shop, or what there was had very little inventory and practically nothing for real bicycle tourists. Even in Indianapolis the tandem dropped out because we couldn't find a wheel for a Phil Wood hub. So, where are riders outside of larger cities supposed to get their equipment or even know what is available?

Phyllis Harmon

Rides Re-ridden



CHAIN O' LAKES - Fifty two people attended this ride on a bright, sunny, warm day. We quickly broke into three groups: an Express paced group, and two Touring groups. The ride goes through many scenic areas on the way to Chain O' Lakes State Park and the return route through McHenry and the Barrington area. By the number of compliments I received, everybody enjoyed the ride.

Hans Predel

DUCK SOUP - This "new" ride covered some familiar territory. We started from Crabtree Nature Center (on Palatine Road, 1/2 mile east of Rt. 62 - not Rt. 14 as stated by the Ride Chairman - he publicly apologized at the July meeting) and headed out to Algonquin via Brinker and Spring Creek Roads. After a satisfying late breakfast, we headed back via River Road and Sutton. The 15 people who managed to find the nature center loved the ride and felt it was a challenging, but satisfying, ride!

Because of the wooded nature of the ride, I intend to run it again in the fall when the leaves are in color. Look for it under the name "Leaf Me Alone" (I've been hanging around Aaron too much!)

Hans Predel

BREAKFAST RIDE An impromptu ride was led by Hans Predel on Saturday, July 15, because the only other ride scheduled was 124 miles long. About 18 riders enjoyed a perfect day for bicycling and repeated Hans' earlier breakfast ride out through Long Grove and breakfast at Alemar's on Dundee and Quentin followed by a beautiful ride back over the Palatine Trail.

BAHAI RIDE - Another perfect riding day! There were about 40 riders so Phyllis Harmon led one group and Howard Paul led another through what we were calling the Millionaires' Ride - through Northbrook, past Jim McMahon's home, through Woodley Road section and Indian Hills into Winnetka and Wilmette. We lunched along the shore of Lake Michigan before heading back by way of the Northbrook track and a few laps before returning to Potawatomi Woods.

Wheeling Wheelmen Shorts Are Cool!

A limited supply of Wheeling Wheelmen lycra shorts are still available in small, medium and large sizes. To place an order, contact Andy Dane at 271-0808. The cost is \$16.00

Schedule

CODES:

L = LEISURE RIDE. 8-10 mph. Group stays together. Leader, cue sheet
 T = TOURING RIDE 11-15 mph. Group stays together Leader, cue sheet
 E = EXPRESS RIDE 15 mph and over. Ride own pace, Cue sheet.

Aug. 5 HILL 'N DALE RIDE - Long Grove

Sat. 7 a.m. - 80 miles from Kildeer
 T School. Ride to Woodstock through rolling countryside. Al Berman-Fran Green 291-1461

Aug. 6 VOLO BOG RIDE - Long Grove

Sun. 7:30 a.m. - 49 miles from
 T Kildeer School. Bring a lunch to be eaten at Volo Bog. Bring extra water. Jack Van Es - 537-0867

Aug.12 PICNIC - Wheeling

Sat. 10 a.m. - 25 miles from Potawatomi Woods, Dundee Road just east of Milwaukee Ave. Picnic barbecue at noon. \$3.00. Great family event - but be sure to phone 541-9248 for a "nose count" so we know how much food to buy.

Aug.13 THE SMALL TOWNS RIDE Mt. Prospect.

Sun. 7 a.m. - 55 miles from Mt. Prospect train station, Rts. 83 and 14. This is a shorter loop of the TOWNS Ride. Bring a sack lunch and extra water--no stores on the route. Leader Carol Passowic but phone Aaron Tanzer at 323-3204 for information.

Aug.13 ZION RIDE, Wheeling

Sun. 8 a.m. - 65 miles from Potawatomi Woods, Dundee Rd. east of Milwaukee Ave. Goes to Illinois Beach State Park. Lunch at the lodge or picnic on beach. Bring bathing suit. Phyllis Harmon - 537-1268.

Aug.19 DeKALB CENTURY - Elgin

Sat. 6 a.m. - 100 miles from Jim Grant's home, 615A Waverly Dr. Some of the prettiest parts of northern Illinois. 742-0814 or Woyteck Morajko 392-0530.

Aug.19 FORT SHERIDAN RIDE, Evanston

Sat. 7 a.m. - 40 miles from Cornelia Lunt Park, Judson and Church Sts. Your last chance to cycle through this operating fort! Late breakfast at McDonalds by the fort. Chuck Brenmark - 253-9025.

Aug.20 LET'S GO CAROLING TO LONG GR.

Sun. 10 a.m. - 30 miles from Mt. Prospect train station, Rts.83/14, Mt. Prospect. Enjoy a leisurely lunch at the Village Tavern. Bring lock and key. Carol Passowic - 392-0530.

Aug.20 TWIN LAKES RIDE - Long Grove

Sun. 6:30 a.m. 89 miles from Kildeer School. Woyteck Morajko 392-0530.

Ride Schedule Continued

Aug.26 BOTANIC GARDENS RIDE Wheeling

Sat. 10 a.m. 30 miles from Potawatomi Woods. Ride through scenic back roads. Gee Cunningham 831-5628.

Aug.26 WANDERING TO WOODSTOCK

Sat. 8 a.m. 83 miles from Eisenhower Jr. High, Jones and Hassell Rds. east parking lot, Hoffman Est. Kim Stanley - 459-9479.

Aug.27 LINDENHURST SPIN Lake Forest

Sun. 9:30 a.m. 55 miles from WEST Lake Forest Train Station. Everett and Telegraph Roads, (Waukegan Road). Bring or buy lunch. Pat Marshall 564-0346.

Tues. P.M. Rides

Every Tuesday through August 29 - 5:30 p.m. Express pace. Distances 20 to 45 miles depending on daylight. If you break down, stay where you are. You will be picked up at the end of the ride. No cue sheet provided. Start from 16 Janes Court, Hawthorne Woods. Jack Van Es 537-0867.

Wed. P.M. Rides

Every Wednesday through August. 6:30 p.m. to twilight - except meeting nights.

Aug. 9 from 527 Gateshead N., Elk Grove Village, Dick Sorenson 593-7945

Aug.16 from Chamber Park, Wolf Road north of Dundee Rd. Dirk Paschal - 537-1505

Aug. 23 from Meadowhill Park Velodrome, Maple one block west of Waukegan Rd., Northbrook Doug Kritz - 498-0114.

Aug. 30 from Kildeer School, Long Grove. Fran Green-Al Berman 541-9248

Thurs. A.M. Rides

9 a.m. moderately paced rides of 20 miles or more. From Dominick's parking lot, northeast corner of Arlington Heights and Lake Cook Roads in Buffalo Grove. Jack Van Es 537-0867.



FOR SALE

FOR SALE:

23" CANNONDALE 3.0, Red, full Dura-ace, Wolber Profile Rims. Like new. \$1,500 or best offer. Jim Hayes, c/o Phyllis Harmon, 527-1268.

RIDE NOTES

by Aaron Tanzer

This month I'll begin with the *Cracked Helmet Award*. It goes to a young woman who came to the Wayne-St. Charles ride with her boyfriend. Although she had done some riding, he had never ridden before. She explained, "Oh, he runs. He'll have no problem". Unfortunately, she did not tell him what to expect, so he came completely unprepared, without even a water bottle. When questioned about it, she said, "He can share mine as soon as we stop someplace where I can fill it." Needless to say, he was dying on the ride and probably won't carry fond memories of the sport of cycling with him. When you encourage friends to try bicycling, help make sure that they go on rides appropriate to their level of experience and that they bring necessary equipment - such as water bottles.

I think that this month Wheeling Wheelmen members should also earn a *Golden Helmet Award* for their awareness of safety consciousness. This came to mind a few weeks ago when I was on the Woodstock Ride. I had misplaced my helmet that morning, so showed up without it. Of the 32 people on the ride, only 3 went without helmet protection. In fact, the Wheelmen are so conscious of helmet safety that the fact that I wasn't wearing one was immediately noticed and good-naturedly commented on. Over the past few years I've noticed a sharp decline in unsafe practices. It is routine now for club members to ride no more than two abreast, warn of oncoming traffic, keep safe distances apart, and signal turns and obstacles. So please keep up what you're doing for safe cycling!

One of my favorite biking activities is the organized weekend. I love to go away for a couple of days with a group and ride in an unfamiliar area. Unfortunately, we don't have many weekends of this sort on our schedule. (This year there were only two: Janesville and the Minaqua Winter weekend). This is understandable because it takes a lot of organization. You might consider organizing a weekend with several people. If interested, let me know.

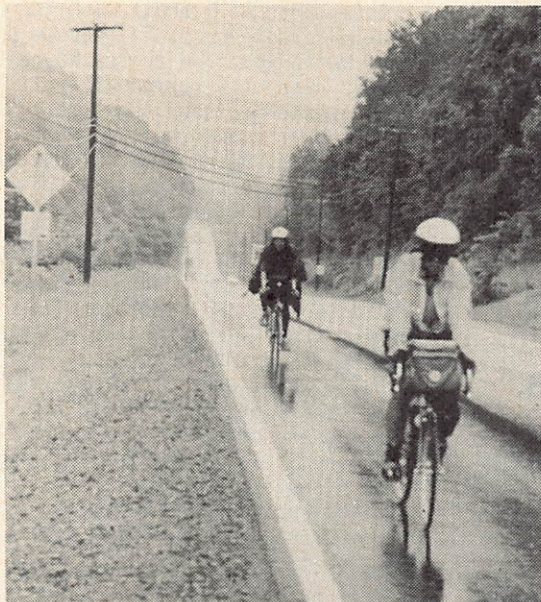
Well, August is here and just like last year the schedule has a number of changes from the annual schedule, so be sure to use the newsletter details.

The end of the season is approaching. We've seen a vast improvement in skill in a number of riders. Many of you would like to try leading your first ride now, and I have some good news for you: You can. As I've said before, there's always room for another ride. If you are interested give me a call and I'll add it to the schedule....323-3204.

PEDAL FOR POWER ACROSS AMERICA

May 14 - June 27, 1989

Los Angeles, California to Salisbury, Maryland



With rain, hail, thunder and floods all over the U.S., we had two half days of rain and tailwinds. This was coming up out of Wheeling WV.



Phyllis Harmon on Assateague Island on shore of Atlantic Ocean.



Final stretch from Salisbury to Assateague and Ocean City, Maryland.



WW member Roger Thauland and Bob Scott of Minnetonka, Minn. carrying bikes to the Atlantic Ocean. We were guests at a delicious chicken barbecue lunch before biking to Ocean City and barrage of reporters.

by Phyllis Harmon

I joined the congenial group of riders in Topeka, Kansas. For this initial ride there were 14 riders, 10 who rode the whole 7 weeks. Organization was perfect! We slept in motels and had breakfast and dinner there. Two sag vans carried luggage and snacks.

Every night we'd watch the weather report: heavy rain and thunder storms predicted and day after day we rode west to east under blue sunny skies!

Riders rode for pledges with half going to charity of their choice and half to Bicycle Education and Legal Foundation of League of American Wheelmen.

The route was beautiful! Los Angeles to Blythe, Cal. to Arizona: Prescott, Sedona, Flagstaff, through New Mexico: Albuquerque, Santa Fe, Las Vegas... Dalhart, Texas, through Kansas with half a day of rain in Emporia and free day in Topeka, through Illinois, Indiana, Missouri hills, Ohio, Pennsylvania hills, Dover, Delaware and into Maryland. What a beautiful country this is!!!!

Left: With TV camera rolling, they dipped wheels in the Atlantic just as they had done in the Pacific.



Pedal For Power Miracle

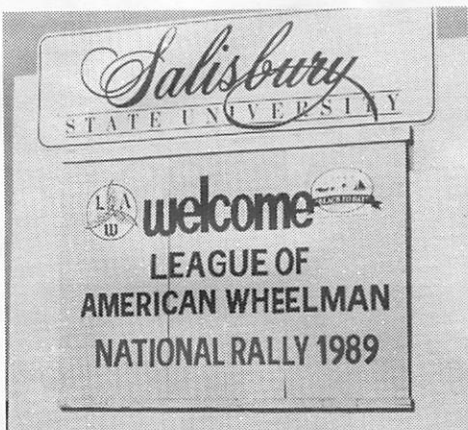


Riders working on tandem wheel trying to remove Phil Wood hub to remove broken spoke behind it.



Car skidded across the road, impaled itself on the culvert with rear wheel spinning inside the culvert!

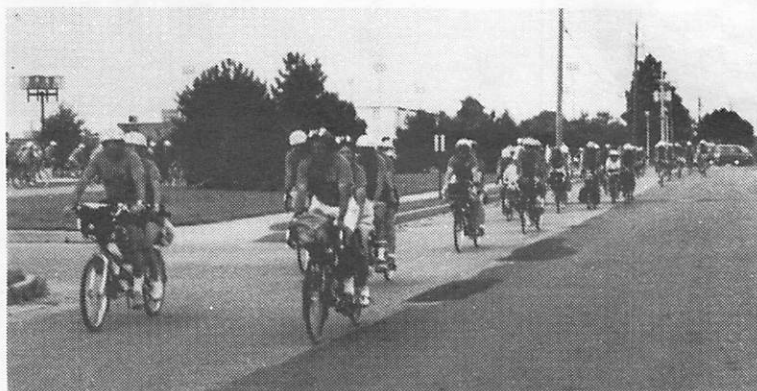
One girl was sitting on the culvert and five of us were standing on the grass and in the ditch watching repair attempts when there was a squeal of brakes, a loud crash and pieces of car fell all over the road. Two cars, one going east, the other west...both drivers looking at us. One driver realized the westbound car had a turn signal on, slammed on her brakes and skidded right at us. The girl on the culvert was swept into the ditch and the car literally "stopped on a dime". If the culvert hadn't stopped it, most of us would have been dead or injured! In the silence that followed we stared at each other in disbelief! Both left fenders of the cars were demolished. Two people carried away in ambulances, cars towed away. The riders? The girl, Maureen Kane, had a scraped shoulder and thigh. Ray LaFazia had a swollen finger and his tandem had a crumpled luggage rack! Miracle!



Other club members at the Rally:

- Lois Paul,
- Roger Thauland,
- Keith and Rosetta Kingbay,
- and, from San Diego, Mike and Laura Enwright.

1,300 riders gathered at Salisbury, Maryland for the League's National Rally. Above: Howard Paul, Phyllis Harmon, Carolyn Wells (of Milwaukee) and Elliott Kanner at the League's Barbecue picnic.

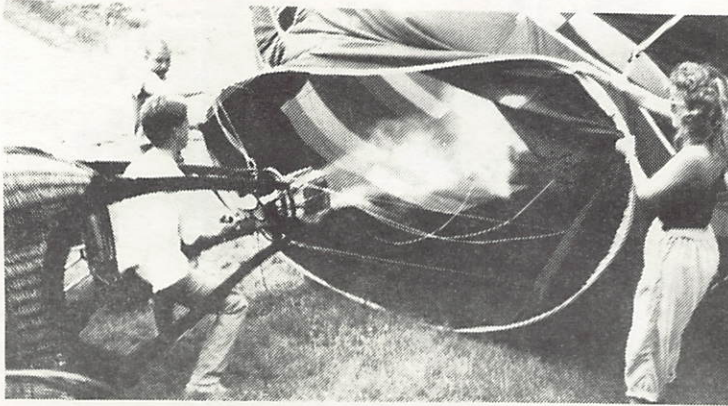


This was a perfect Rally! Beautiful routes, no traffic, great entertainment, delicious food! Tops! On Sunday night 1300 riders gathered for a parade to a band concert in the park. Dressed in watermelon red shirts, riders pedaled to the sloping hill and mingled with the townspeople. The gazebo was at the bottom of the hill, picturesque river with suspension bridge behind it and sloping hill on the other side. We enjoyed the music, children's parade and group singing. Then riders quietly got to their feet and headed for their bicycles to head back before dark. The townspeople lined the street and waved and smiled at us: "Come again".. "We're glad you could come".. "We enjoyed your visit come back". What a delightful experience and a perfect end, too, to PEDAL FOR POWER ACROSS AMERICA!

BALLOON RIDE

by Jerry Hug

Photos by Jerry Hug and Jane Newell



Inflating the balloon is fascinating to watch.

Sixteen Wheeling Wheelmen and six tandem teams from C.A.T.S. (Chicago Area Tandem Society) rode either 25 or 40 miles to view ski jumping from the Norge ski hill and hot-air balloon lift-offs from the Windy City Balloon Port at the base of the ski hill.



Finally! The balloons are inflated and ready to take off. The colors are so bright and the balloons dwarf the people below. The "I do's" have been said and the wedding party is ready to head off for the wild blue yonder....



Ride Leader: Jerry Hug

Riders had the special treat of seeing a wedding ceremony at the foot of the ski hill with the bride and groom lifting off in a hot-air balloon with the parents following in another balloon.

The balloon ride was scheduled for the longest Saturday (daylight) in the year so that we had light for the return trip following the balloon lift-offs at 6:30 p.m.

Jane Newell said it was "the best Saturday night I've had in 10 years! The ride was fun, educational and super exercise for that sandwich from Boloney's.

Watch next year's schedule for this unique Wheeling Wheelmen ride.



Left: Diana Kruglick and Jane Newell.



BRAG '89

Bicycle Ride Across Georgia



Andrew Young, Mayor of Atlanta, Georgia, and Howard Bronson pausing in Thomson, GA, during BRAG '89.

The 10th BRAG ride, 416 miles from Atlanta to Savannah, Georgia, had 1,900 riders pedaling all but the last day of the week-long trip in heavy rain. Mayor Young rode right along with the bicyclists.