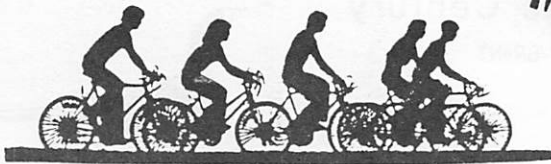


APRIL, 1987



# MONTHLY MEANDERS



## April Meeting

Wednesday, Apr. 1  
7:30 p.m.

WHEELING HIGH SCHOOL  
Elmhurst Rd. & Hintz  
Room 217 2nd Floor N



PROGRAM: I N D I A

BY KEITH KINGBAY

Keith will show his beautiful slides and tell us of experiences in that exotic country.

## GREAT NEWS!!



### Wedding Bells

Don Derebey and Elida Rech were married in Fort Myers, Florida, on March 9 and Elida and Don are back in Arlington Heights ready to roll up top mileage for 1987.


Congratulations and best wishes from all of us!

## Membership Renewal

Last call! Another application is enclosed for those of you who haven't renewed...but hurry! All expired memberships are dropped from our mailing list with the May newsletter and, at the same time, we mail out our current membership.

Be sure to sign release and enclose check. Questions? Call Pat 564-0346.

WHEELING WHEELMEN  
P. O. Box 581-D,  
Wheeling, Illinois 60090

An  Affiliate

## THE PREZ SEZ

Our first ride of the season, our invitational St. Patrick's Day ride, was cancelled because several inches of snow on the ground meant very questionable safety on the roads. Approximately 15 people showed up to ride, including a few with ATB's (All-Terrain Bicycles). For those who came we gladly shared our cookies, said we were sorry and gave them a souvenir cue sheet. For those of you who volunteered to work registration, mark routes, bake cookies, etc., I thank you! Thanks also to Jerry Goldman, chairman.

At our March general meeting our "own" Jerry Goldman gave a slide presentation of his "Pedal Across Wisconsin" rides. If you haven't been on one of his rides, do so, it's a wonderful experience.

This year our general meetings will feature free drawings to give away some donated T-shirts, cycling products and other interesting trivia. Everyone who signs in is eligible. Last month we gave away Carter Le Beau's BEAR and LION T-shirts. Yes, we do have fun at our general meetings and at our social afterwards. Come and enjoy.

Our Executive Board has been meeting once a month to undertake the business of running a bike club! It has been very helpful having our officers come together to make decisions for the benefit of our members. I thank all of them for work well done.

We are looking for a "Patch Chairman" who would be responsible for ordering L.A.W. special holiday patches such as Easter, Memorial Day, Halloween, etc. If interested, phone me at 948-7288.

Starting with the April meeting, our bicycling library books and our club tools will be available for checkout at the meeting. This will be more convenient for members.

Plans are underway for our "best ever" HARMON HUNDRED. This year, our main feature, besides the beautiful weather and routes, is the provision of T-shirts for our riders. We'll need lots of volunteers to help us with one of the best centuries in cycling. If you can help (Sept. 13) sign up at a meeting, or give me a call.

Al Petty, President

## This Ride's For You!

Tired of the hum-drum apple pie ride? The ice cream ride? The pizza ride? Do you hanker for a great A+ ride? Do you want to put a little adventure into your life? We've got just the thing!

Dick Sorenson has just announced the formation of a new bicycling group - - the WHEELMEN ADVENTURE CLUB, INC (WACI) for those of you who are yearning for adventures on two wheels. WAC is looking for a few good riders with Esprit de corps - those with just the "right stuff"!

Our kick-off ride is the spring historic tour of Lebanon, a two-week glamorous cycling adventure, fixed-base out of Beirut. Enjoy fun, scenic bicycling roaming the hills and dales of this picturesque country. The group will stay in charming huts and bombed-out quaint hotels, scattered throughout the various sectors of this historic village. The food will be interesting. Yes, the natives are friendly--they love us. Don't believe the yellow journalism you read in the daily press. This tour is getting the full cooperation of the Tourism Council of Greater Metropolitan Beirut. Our armed tour guide will show us the really "in" spots, those sights rarely seen by non-military personnel. Fellow adventurers from the local Shiite/Druse Bike Club will join us for tours of the pretty countryside. Join us for the grandeur of Lebanon in the spring!

Plan ahead for our fall jungle extravaganza, "El Salvador to Nicaragua Ramble." Bicycle on winding, back-country, unpaved roads. Converse with Sandinistas, Contras and other native species. Enjoy the warm camaraderie of small groups.

(APRIL FOOL)

## Bernard's In France

48,117 miles bicycling around the world! Bernard Magnouloux returned to his home in France on Dec. 21.

cont. page 3.

President:	Al Petty	948-7288
Vice-Pres:	Jim Grant	506-1269
Treasurer:	Betty Vargas	259-3210
Membership:	Pat Marshall	564-0346
Safety:	Rich Wemstrom	634-1168
Secretary:	Phyllis Harmon	537-1268
Editor:	Phyllis Harmon	537-1268

## The Flamingo Century

BY JENNY GRANT



Alligator



Anhinga

On the morning of March 4, Jim and I embarked on a unique adventure into the Everglades National Park of Southern Florida. I had been preparing for the Flamingo Century for weeks by reading about the Everglades environment and training on a Life-cycle at the health club. Now the preparation was about to bear fruit.

The Flamingo Century is the high point of the bicycling events at the Wheelmen's Winter Rendezvous, hosted by the Dr. Paul Dudley White Bicycle Club, in Homestead, Florida. Riding during the days prior to the century consisted of Early Bird rides within Homestead, followed by further destinations such as Key Largo, local parks and farms. We had managed to ride over 50 miles on each of the three days prior to the century. My goal was to build up my endurance enough to complete my first March century.

We had visited the Everglades a couple of years ago and were fascinated by the mixture of vegetation and wildlife in a unique setting. The Everglades region of Southern Florida consists of 13,000 square miles of wilderness and the Everglades National Park is 2,020 square miles itself, the third largest national park in the country. The marshy land is a "river of grass" covered with scattered tall grasses, giving the park its name. The interior remains largely under water most of the year. The slight tilt of the land keeps the peninsula draining southward. The plain is actually a sea bottom exposed only a few thousand years ago.

The subtropical climate provides nearly uniform warm, sunny weather, but there are distinct seasons. Summer is wet; winter, dry. Heavy rains during intense storms from late May to October bring abundant insects, including mosquitoes.

Our century day began on a negative note as we listened to a steady rainfall beginning at 2:00 a.m. A front had stalled at the end of Florida causing unusually wet weather. Fortunately, the rain and clouds disappeared with the onset of daybreak. I felt a tremendous relief upon beginning the ride at 7:00 a.m. having avoided potentially miserable conditions, at least temporarily. After all, we had driven over 26 hours and 1500 miles for the experience!

As we approached the park entrance 12 miles from Homestead, the scenery became more appealing, taking on the

untouched appearance of our national parks. The lack of roadside garbage, characteristic of surrounding agricultural areas, was a welcome sight. The first rest stop was at the park entrance and the club provided the usual biker's refreshments. The main park road begins here and ends 38 miles down the road in Flamingo.

We had an easy time with a strong tailwind and maintained a steady speed of 16 mph. The elevation changed by only a few feet at the most, and the only variation in the road were some gradual curves. We chose to concentrate solely on the bicycling and bypassed the numerous walking trails off the road, saving our energy for the return ride against the wind. We had walked most of the trails during our previous visit and strongly recommend them for an educational experience in the ecology of the area. For example, The Anhinga Trail offers the best opportunity to see wildlife close-up. Alligators, turtles, fish and many birds inhabit the site. The Gumbo Limbo Trail winds through a hardwood hummock, a jungle-like grove of tropical trees and smaller plants.

The sole need at hand was to keep the pedals turning. I felt close to the land with unobstructed view mile-after-mile of the vast expanse. The openness reminded me of the Midwest, and I felt a sense of belonging. Red-winged blackbirds and meadowlarks welcomed me with their familiar movements and songs. At the rest stop halfway to Flamingo, we watched a group of egrets in the distance dreamily circle among the trees of some hummocks, alternately rising and alighting. The hardwood hummocks usually sit about three feet higher than the surrounding area. I returned to my bicycle in a buoyant mood and wondering at the apparent ease of flight in the windy environment.

We were ready for the lunch stop in Flamingo and sat on a blanket to avoid potentially nasty insect bites from the ground. But we departed with enough token mosquito bites from the other direction to bother us for days. Flamingo is the southernmost settlement on the Florida mainland and has the only overnight accommodations in the park.

We enjoyed our return trip to the Visitor Center as we visited with Pierre from France. He amazed us with the apparent ease he covered the distance on a topnotch folding

bicycle, which he had transported to Homestead in a suitcase! Jim had plenty of opportunity to practice his French.

The headwind at over 20 mph quickly took its toll, however, and we gave up conversation in our efforts to keep a steady pace. I was thankful for the occasionally overcast sky and comfortable temperature as I was wearing a long sleeved shirt to shield my sunburned arms. Fifteen miles before the park entrance I began to tire quickly and the novelty of the experience lost its edge as I suddenly needed a washroom. I concentrated on examining the surrounding landscape and setting mileage goals, not willing to risk a roadside rest stop in the unfamiliar vegetation. My mind conjured up all kinds of hidden dangers from vicious insects to malicious alligators and snakes. Finally, the waving flags of the Visitor Center was a welcome sight.

I felt sore and stiff but relaxed when walking into the Visitor Center. The sterile environment with well dressed tourists and neatly arranged exhibits and books was a shock. I only hoped that the visitors would all continue past the Visitor Center and leave the restrictions of their vehicles long enough to experience the fragile environment of "The Glades."

Back in Homestead, we were extremely happy to receive the beautiful Flamingo Century Patch. The Rendezvous had provided a welcome relief from the Chicago winter and a great source for spring training. Perhaps some year we will set another goal and brave the Everglades during the night in an attempt to complete the Flamingo Double Century.



Great Egret

*This was the 21st Winter Rendezvous. It was great to greet the many riders that come year-after-year for a bit of summer in mid-winter. Wheeling Wheelmen were represented by Jim and Jenny Grant, Don Derebey, Mary and Herb Jensen and me. It was great to see Elida Rech even if it was only for one day!*

*Many of you know Bill Meyet and Vada Gibson. They are now riding a tandem since his Paramount was stolen.*  
Ed.

# Schedule

RIDE RATING: "A" ave. 14-16 mph;  
"B" ave. 10-13 mph; "AB" two groups riding.

You all have your 1987 Ride Schedule but be sure to use the schedule each month in our newsletter for that will include any update, changes or cancellations.

Apr. 4 APPLE PIE RIDE, Buffalo Gr.  
Sat. 11 a.m. - 35 miles from Buffalo B Grove H.S., Arlington Hts. and Dundee Rds. Lunch at Wauconda Apple Orchard. Elliott Kannet - 541-7945.

Apr. 11 MILK PAIL RIDE, Elk Grove  
Sat. 8 a.m. - 40 miles from Biesterfield & Wellington - 1 blk. west of Arl. Hts. Rd. on Biesterfield across from the Village Hall. Lunch at the Milk Pail. Dick Sorenson - 593-7945.

Apr. 18 CANTIGNY RIDE, Hoffman Est.  
Sat. 9 a.m. - 40 miles from Eisenhower Jr. H.S., Jones & Hassel. Beautiful ride through western suburbs to Col. McCormick's WWI memorial park. Lunch on route. Aaron Tanzer, 338-5374.

Apr. 19 COLLEGE CAMPUS CRUISE, Wheeling  
Sun. 10 a.m. - 35 miles from Amber Park, W. 1st Rd. north of Dundee Rd. Buy 3 campuses. \$3.00 for lunch at Lake Forest College. Don Derebo - 255-3422.

Apr. 25 AUDUBON RIDE, Hoffman Estates  
Sat. 9:30 a.m. - 47 miles from Eisenhower Jr. H.S., Jones & Hassel. Bring or buy lunch. George and Marilyn Mathison - 825-5470.

NOTE DATE SWITCH OF NEXT TWO RIDES

Apr. 26 WOODSTOCK RIDE, Long Grove  
Sun. 8:30 a.m. - 75 miles from Killdeer School. Bring or buy lunch in Woodstock. Keith Kingbay - 459-8242.

May 2 WESTWARD HO, Elgin

Sat. 9:30 a.m. - 65 miles from Wing AB Park. Rt. 31 south of NW Tollway to Wing. West to park. Bring sack lunch. Jerry Goldman - 695-7964

May 3 TERRY'S SPRING TUNE-UP Hoffman Estates  
Sun. 11 a.m. - 27 miles B from Eisenhower Jr. H.S., Jones & Hassel.

## TOUR OF THE FOX RIVER VALLEY

AB ride May 9-10. 100 miles each day. Leaves promptly 6 a.m. from Frontier Park, Palatine & Kennicott, Arl. Hts. Scenic route to Janesville, Wis. Overnight Super 8 Motel. \$25, double \$35. Sag wagon will carry tools and baggage. \$3. Sunday return via Lake Geneva and McHenry. Send check for \$25 or \$35 before April 15 to Jim Grant, 1216 S. New Wilke Rd. Arlington Heights IL 60005. 506-1269.

## INVITATIONALS

April 12 FOLKS ON SPOKES EASTER RIDE  
8:30 a.m. Governor's State University 25 or 62 miles flat to rolling. \$7.50 incl. food, patch, sag. Folks On Spokes, c/o M. Black, P.O. Box 824 Homewood, IL 60430. 798-3954.

May 3 BLOSSOMTIME METRIC CENTURY

25, 50 and 100 km in beautiful country around Berrien Springs in SW Michigan. \$9 incl. food stops, patch refreshments, caution flag. From Bell Hall at Andrews Univ. Berrien Springs. Info: 616/471-3592 eve. and weekends.

4 QUALIFYING RIDES PARIS-BREST-PARIS

Capren, Ill. 50 miles NW of Chicago. Info Sue Notorangelo-Haldeman, P.O. Box 73, Harvard, IL 60033. Phone 815/943-3171.

May 3 200 km Entry fee \$5.00  
May 16 300 km Entry Fee \$5.00  
May 30 400 km Entry Fee \$10.00  
June 13 600 km Entry fee ?

May 17 McLEAN COUNTY WHEELERS SPRING Metric. 7 a.m. Ash Park, Normal, IL. 33, 65, 100-mile routes. \$5 by May 1 or \$8, incl. map, sag, route, food. Info. Dale Kruse, 100 N. Linden, Normal, IL 61761. 309/454-1541.

June 6 UDDER CENTURY, Crystal Lake

25, 50, Metric Century and 100 miles. Registration 7:30-10 a.m. at McHenry County College on Rt. 14 (NW Hwy) in Crystal Lake, Illinois. \$10 includes patch and water bottle. McHenry County Bicycle Club. Cheryl Patterson - 815/385-2296.

TOGIR TOURS: Send for brochures to 2325 Fulton Ave., Davenport IA 52803

oThe Other Great Iowa Ride (TOGIR) June 20-26 from Marycrest College, Davenport. 7 night's college lodging @ \$4-\$18/night. 13 meals \$63.00

oLocp Iowa's Outstanding Northwest (LION) July 11-12 2 full days, 4 optional loops. \$35 to March 15, \$40 after May 1. From Luther College in Decorah, IA. 2 meals, patch, sag, etc.

oBicycle Early Agricultural Roads (BEAR) July 31-Aug. 2. 2 colleges for overnights \$4-\$16. 5 meals \$29.

oTour Iowa's Great Eastern Region (TIGER) Aug. 8-9. \$30 to Apr. 15; \$35 to May 15; \$40 until July 15. incl. 2 meals, patch, sag wagon, baggage and tent transp. Lodging Cornell College available.

June 13-14 TOUR OF MISS. RIVER VALLEY

102 miles Sat., 86 miles Sun. \$30 to April 30 or \$35 up to May 31, incl. patch, fanny bumper, map, cue sheet, baggage transp. banquet. Overnight \$4 to \$17. Quad-city Bicycle Club, c/o Joanie Richards, TOMRV Secy. 2839 E. 32 St., Davenport, IA 52807.

## Vice Activities

I want to thank everyone who volunteered to be a ride leader this year. Compiling the schedule is certainly an easy job when so many people are more than willing to design and/or lead rides.

With the arrival of the riding season, I am sure most members are looking forward to their regular excursions into the local wilds again. This year those excursions will be more enjoyable than ever before because the "A" "B" and "AB" classifications and wide variety of rides will enable everyone to enjoy club rides at their own pace.

Jim Grant, Vice President

MAY 9--TANDEM BICYCLE RECORD ATTEMPT

Pete Penseyeres and Lon Haldeman are hoping for a sub 8-day transcontinental and are hoping to exceed 400 miles per day!

JUNE 20--RAAM 87 will start on new route San Francisco to Wash. 3100 miles through St. Louis and Indpls.

SPINNING A DREAM: A BICYCLE TRIP ACROSS THE UNITED STATES is title of a book by Laura M. Failla. \$7.00 plus \$1.00 postage to Laura M. Failla, 4064 Mississippi St., San Diego, CA 92104.

Besides covering the trip from San Diego to Auburn, Mass., there are 35 pages of appendices covering resources needed to plan bike trips.

NEED INFO ON L.A.W. NATIONAL RALLY IN LANSING, MI JULY 1-5 OR GEAR'87 ON LONG ISLAND JULY 17-20, CONTACT PHYLLIS HARMON, 356 ROBERT AVE., WHEELING, IL. PHONE 537-1268.

**Bernard...** from page 1

In May, 1981, Bernard Magnouloux set out from France to pedal around the world. In October, 1985, he was in Wheeling, gave the program for our October meeting by showing slides of his adventures, 34,000 miles at that time. He rode in our Bike-A-Thon and then headed west to California and on to Singapore, China, Tibet, India, Pakistan, Turkey and arrived back in France on Dec. 21, 1986.

The twinkly blue-eyed Frenchman was escorted by 50 bicyclists, a loud speaker and the police to a reception of over 500 people where there were lots of speeches, interviews, presents and gifts.

Bernard writes: The last joke of this journey was the present of the radio station who followed me: a \$1000 custom made bike, equipped like a mountain bike and perfect for a round the world trip. But they miscalculated: I'm staying home - It's so nice!

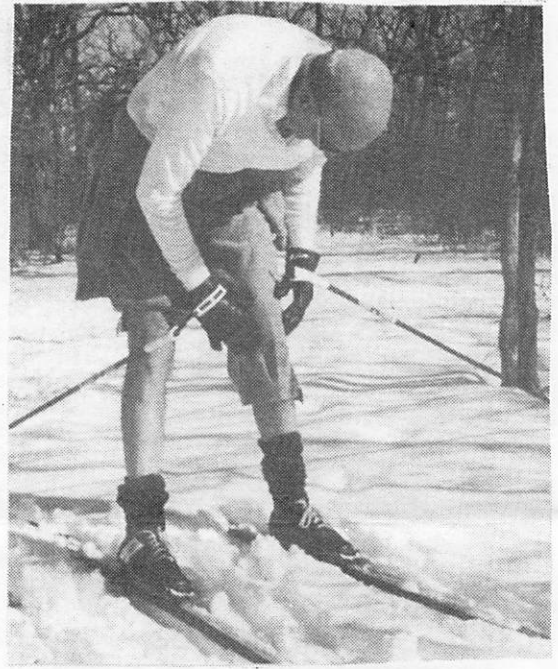
## Winter Extremes



*Left: Where is Everyone? -7° at Deer Grove. Leader Pat Marshall went 3 hours alone.*

*Right: My these hills are hot! Dick Ryan trying to cool off on South Kettle Moraine ski trail.*

*Photos by Pat  
Pat Marshall*

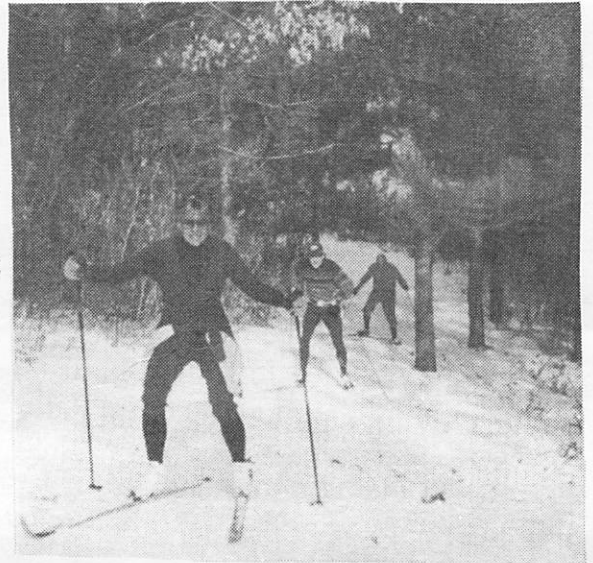


*Right: Glaciated terrain made for hard work up hills.*

*Lynn and Al Petty and Dick Ryan at South Kettle Moraine.*

*Left: March cycling in warm sunny Florida at Wheelmen's Winter Rendezvous.*

*Herb and Mary Jensen at Turkey Point picnic.*



*Left: Bill Meyet and Vada Gibson (riding a tandem because of theft of his gold-spoked Paramount), Bill Sullivan, Oklahoma City, Phyllis Harmon, Jenny and Jim Grant and Don Derebey...enjoying camaraderie, good picnic food and balmy skies.*

*Unfortunately, the customary return ride by way of Knaus' Berry Farm for luscious strawberry sundaes was skuttled because of a heavy downpour!*