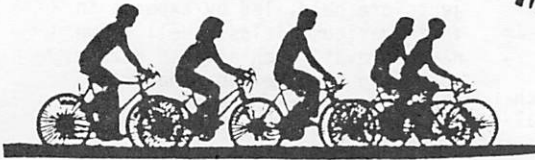


NOVEMBER, 1986



MONTHLY MEANDERS



NOVEMBER

BANQUET

SAT. Nov. 1, 1986,
HANS BAVARIAN LODGE
931 N. Milwaukee Ave.
Wheeling

SOCIAL HOUR 6:30 - DINNER, 7:30

PROGRAM: AL AND LYNN PETTY'S

HONEYMOON ON WHEELS
YELLOWSTONE AND THE CANADIAN ROCKIES
SPECIAL AWARDS FOR TOP MILEAGE ON
CLUB RIDES; SERVICE RECOGNITION; AND
MEET OUR 1987 OFFICERS.

\$11.00 - choice of prime rib or white
fish dinner. SPECIAL: \$5.00 price for
all workers and cookie makers for the
HARMON HUNDRED!

Checks payable to WHEELING WHEEL-
MEN, send to Keith Kingbay, 450
Checker Dr., Buffalo Grove, IL 60089.
Info: 459-8242. Form enclosed.

Hosts Needed

Hosts are needed for our Christ-
mas ride and potluck in mid-December.
Club pays for the meat course. This
is a fun-social event which includes
a bike and/or hike, depending upon
the weather. Bring a grab bag item.
Discussion at our Banquet.

Also, who can host our New Year's
Day bike or hike and social hour
afterwards. We meet at 10 a.m.
Length or bike ride or hike depends
on the weather and temperature. Then
enjoy a warm cup of coffee, choco-
late or cider and cookies or snacks
brought by members. Start the New
Year right!!!!

With these holiday socials, we
won't be back at Wheeling High
School for meetings until Feb. 4.

WHEELING WHEELMEN

P. O. Box 581-D,

Wheeling, Illinois 60090



An Affiliate



SAFETY CORNER

BY AL PETTY

Well, here we are. Another cy-
cling season has come to a close,
except for the hardy riders who hit
the roads during the winter months.
I hope you took a good look at safe-
ty during your riding experiences.
Perhaps some of the items I brought
to your attention in the past month
have had a positive effect on you,
and that your awareness of bicycle
safety has been increased.

With the increase of cyclists
each year, it is important to help
the new riders in safety areas.
There are so many facets in the area
of bicycle safety that all of them
cannot be covered adequately in a
year's time through safety articles.
But, every little bit helps.

Anyway, it was fun for me to share
the articles with you. May you con-
tinue to enjoy cycling as much as I
do, and please take care of yourself
bicycling on the roads. Be careful
out there!

Don Derebey in Illinois Senior Olympics

Don Derebey decided to try his
wheels at the Illinois Senior Olym-
pics in Springfield and won three
silver medals for the 1/4-mile, 5-
mile and 10-mile bicycle races!

Don found the Olympics to be an
inspiring event: Everyone tries any-
thing--they don't have to be experts!
Don entered ping pong, horse shoes,
basketball, free throw, bowling,
shuffleboard and track!

The Senior Olympics are held in
September in Springfield and covers
events from Friday through Sunday.
There are opening ceremonies includ-
ing carrying the torch, flag raising
and band - also social activities in
the evenings. Try it - it's fun!

Wheeling Bike-A-Thon

Our 4th WHEELING BIKE-A-THON has
raised over \$6,000 for the crafts,
supplies and programs for the Wheel-
ing Pavilion Senior Center. Through
the enthusiasm of the seniors, dol-
lar donations and door prizes poured
in, brochures were printed, posters
distributed, schools, park districts
etc. were contacted. Then for the
big day itself, Wheeling Wheelmen,
several seniors, and a couple of
fellows from the Jaycees pitched in
to make it a smooth-running day.

Our own Jane Newell not only
raised the most number of dollars
through pledges - over \$350 - but
she pedaled 50 miles, along with
Phil Badame, Dale Youssi and Michael
Curnow. Keith Kingbay pedaled 90
miles. Three riders, including
Wheeling President Sheila Schultz
and Barbara Hansen raised over \$200.

It was great that so many of you
not only put in 3 hours at registra-
tion or handing out tokens but were
able to ride, too. Chuck Brenmark
won the top door prize: a Panasonic
FM-AM stereo radio!

Our first rider, at 7 a.m., was
Michael Curnow. He registered and
headed out over the course. Some
minutes later we saw him walking his
bike over the grass from Carl Sand-
burg school. He had followed our
yellow arrows from the Harmon Hun-
dred instead of the white ones and
ended up at Wheeling High School!
Off the course and a flat tire he
asked if there was a bike shop near
by. Just then, out of a van, came
a fellow from C C Cycle to set up a
bike repair stand for the Bike-A-Thon.
He repaired the tire and Mike set
out again and totaled up 50 miles!

President:	Bob Meute	823-2592
Vice-Pres:	Jim Grant	506-1269
Treasurer:	Dick Sorenson	593-7945
Membership:	Pat Marshall	564-0346
Safety:	Al Petty	948-7288
Secretary:	Phyllis Harmon	537-1268
Editor:	Phyllis Harmon	537-1268
Program:	Keith Kingbay	459-8242
Rec. Secy:	Marilyn Mathison	825-5470
For check out:		
Bike Tools:	Bill Butcher	541-7411
Library:	Dick Ryan	381-1775

ProBike is sponsored by the Bicycle Federation of America which is a national nonprofit organization established to encourage the increased use of bicycles for transportation and recreation. Managed by a volunteer Board of Directors, the Bicycle Federation fulfills its mission by:

- * disseminating information and technical assistance to an international network of community activists and city officials involved in bicycle programs, and

Pro-Bike, Seattle

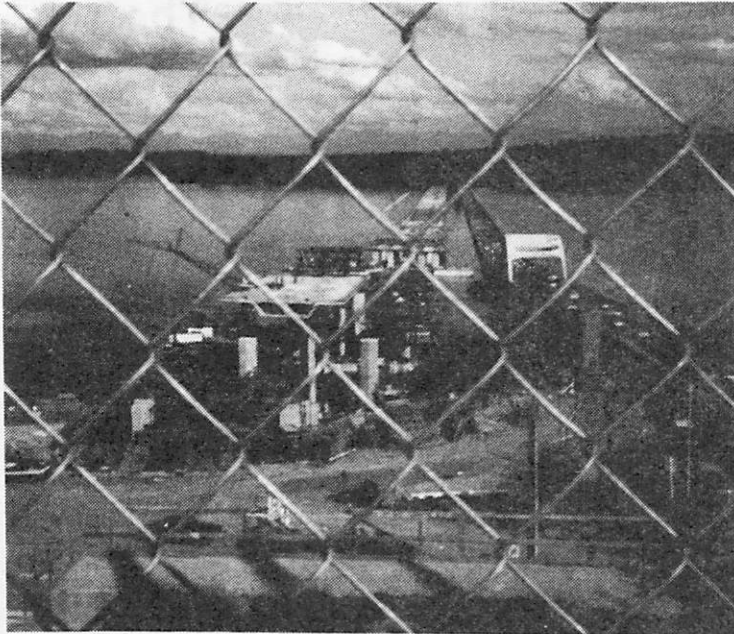
By Phyllis Harmon

- * designing and managing national bicycle promotion campaigns which are implemented in specific local markets.

In 1980 the first PRO BIKE Conference on Bicycle Programs and Promotion was held in Texas. As a result on even years since Pro Bike was held in Denver in 1982, Miami in →

1984 and Seattle this year.

Workshops on 40 different subjects are held, led by experts in their various fields. Well known names prevail such as: Dan Burden, currently bicycle coordinator in Florida, expert in communication skills, organizer of BIKECENTENNIAL; Elliot Winick, Exec. Dir. NY AYH; Gary MacFadden, BIKECENTENNIAL; Steve Clark, President, League of American Wheelmen;...dozens of top people. Workshops include: Bicycle



Enforcement; Bicycle in the Urban Transportation Planning Process; Bicycle Education; Charity Fundraisers; Federal Programs; Rural Mapping; Rails to Trails Trends; Liability and Risk Management for Special Events; Bicycle Advocacy; Bikeway Maintenance; Case Studies Session, etc.

A facilities tour of Seattle showed Seattle to be a very bicycling conscious city. Every bridge and every foot of new highway has bicycle lanes provided. A number of excellently marked bicycle routes wind throughout the area and along the shores of Lake Washington. Interstate 90 is a floating bridge coming from the east from Mercer Island across Mercer Island. A new 10-lane floating bridge is being built alongside with 10 feet for bicycles, center lanes for automobiles and south lanes for trucks and light rails. As the bridge nears the Seattle side, the lanes will split into three tiered tunnels to go through Queen Anne Hill.

Left: The current 4-lane I-90 floating bridge is on the right. The new 10-lane floating bridge shows the beginning of the 3-tier tunnel. This is quite an innovative engineering project and great for all bicyclists!



Here the 3-tiered tunnel exits Queen Anne Hill. The top half-circle tunnel is for bicycles, the lower tunnel is for automobiles and the third tunnel, still to be made below, is for trucks and light rails.

The current I-90 is in the right background.

Pro Bike 1988 possibly will be in Tucson, Colorado Springs or Madison. Odd numbered years meetings are held in 7 regional districts.

Treasurer's Report

Dick Sorenson

Balance Dec. 31, 1985 \$2,573.99

INCOME

Membership Dues	1,866.00
St. Pat. Ride (Patches)	799.00
T-Shirt Sales	69.00
Misc.	8.00
Harmon 100 Profit	<u>2,013.95</u>
Total Income:	<u>4,735.95</u>

EXPENSES:

Newsletter	1,421.27
St. Pat. Ride (Patches)	786.00
Membership Expenses	644.74
Postage	382.54
Computer Services	100.00
HH Videotape (1985)	75.00
Meeting Expenses	57.62
Banquet Deposit	50.00
P.O. Box Rental	29.00
Misc.	13.00
Total Expenses:	<u>\$3,559.17</u>

Net Income: \$1,176.78

Balance Sep. 30, 1986 3,750.77

Due from BICYCLE USA 330.00

Total to Date: \$4,080.77

Schedule

Nov. 1 LIBERTYVILLE RIDE, Wheeling
Sat. 10 a.m. - 32 miles from Chamber
Park, Wolf Road north of Dundee
Rd. Lunch in Libertyville.
Elliott Kanner - 541-9176.

This is the last scheduled ride for the year in our Ride Schedule, but if the weather is rideable, call Jim Grant to see if an impromptu ride is being set up. Any ride during the week before or after Thanksgiving will earn you the L.A.W.'s Thanksgiving patch - \$2.00. Also there are Christmas and New Year's patches, too.

Wayne Phillips' Fund

At our October meeting we voted to send \$100 to the Wayne Phillip's Fund. Wayne was paralyzed by a hit and run driver when riding the Race Across America Ride last year. So far \$90,000 have been donated to the fund - but his expenses so far are \$250,000!

It's A Small World

Bike riders aren't easily recognized when in other than bicycling clothing but the nurse in her doctor's office looked familiar...Judy Doi discovered the nurse was Eileen Butcher!

At Epcot Center in October Phyllis Harmon noted a well suntanned couple who turned out to be David and Annabelle Chaney of Chardon, Ohio. Dave is a past Director of L.A.W.

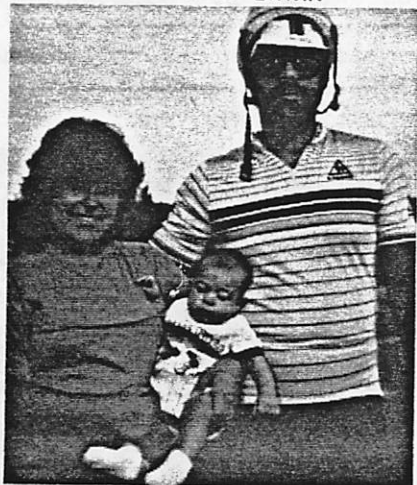


Photo by Pat Marshall

Guess who showed up for Al Dargiel's Chain-O-Lakes ride dressed to kill in her biking outfit. (Bicycle racer) Jessica Dargiel, 2-1/2 months old, in mother Eva's arms. When Eva came home from the hospital she was dumbfounded to see what Al had for young Jessica. Not only a tricycle but a real bicycle with training wheels.

Rides Re-riden



WAYNE-BARTLETT RIDE - Seventeen people came out to Bloomingdale for the 37-mile route through the rolling farmlands of the area. It was a wonderful day to be biking and we enjoyed stopping at the country store in Wayne to get something for the stop down the road at Pratt's Wayne Woods where we ate lunch alongside a beautiful lake. The ride back from the park went smoothly despite some threat of rain.

Lynn Leander

GREEN BAY TRAIL - The day got nicer as 20 riders pedaled south from Lake Bluff to the Northwestern University campus via the Green Bay Trail and other assorted miles. Our trip back, mostly on Sheridan Road) gave us the opportunity to see the lovely homes bordering Lake Michigan on the North Shore and complete a ride of 43 miles.

Pat Marshall

ZION RIDE - It was drizzling as I pulled into Chamber Park thinking no one would show up to ride in the rain - but Jim Grant and Richard Berg were there ready to ride. Then George Mathison and Muffin pullin in closely followed by Pat Marshall, Carolyn Kropp, Jack and Lilian Russell... Obviously there would be a ride - rain or no rain. Only one decided not to go and we headed out with tiny drops pinging on my helmet. We picked up Ralph and Cindy Cochran and Wright Forest Preserve but before long the rain stopped. It remained overcast all day but no more rain in contrast to our last year's drenching both going and coming! We viewed the beautiful Lippizan horses as we pedaled past the Tempel Smith farm and headed east to the Illinois Beach State Park and a delicious lunch in the lodge. As we rode the Deerfield bike path alongside Riverwoods Road we were passed by a group on oncoming teenagers - accompanied by an adult - soon followed by additional groups and at the very end was - Al Petty! This was his Holmes Jr. High riding group!

Phyllis Harmon

CHAIN O'LAKES RIDE - Even though the threat of flash-flooding and severe thunderstorms was predicted, 9 members and 2 visitors set out on a fast-paced ride to the state park. Along the way the skies cleared but the wind became a formidable foe. Thanks to some cold cider and beer at Wauconda Orchards on the way back, our ride leader, Al Dargiel, was saved from a mob lynching by a tired and worn-out group of riders.

Al Dargiel

TOUR DE FRANCE - Keith Kingbay gave us very interesting background information on how the Tour operates, the various stages, team riders cooperation, and especially we were surprised learn that four organizations established the Tour de France and one of them was the League of American Wheelmen!

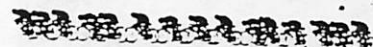
DAN WRIGHT FOREST PRESERVE RIDE - With the constant downpour, flooding of roads and houses (Portwine was under water) Elliott Kanner, leader, still planned to lead the ride as long as riders could get through - but a heavy downpour cancelled all plans.

BREAKFAST RIDE - Rain again! No one would want to ride - but Jack and Lilian Russell phoned at 6:40 a.m. all ready to go. I cancelled their plans but decided to drive the short distance to Carl Sandburg School in case anyone did show up. It was pouring but there was Jane Newell in her car waiting to ride! Then she thought she might ride along the lake front with the Evanston club... but then decided she would collect her pledges for the Bike-A-Thon - maybe she could collect as much as \$500 instead of \$350!

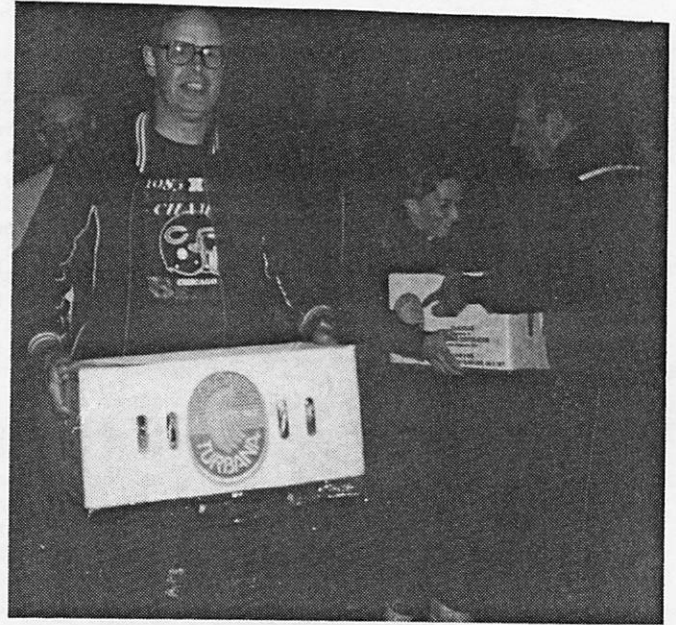
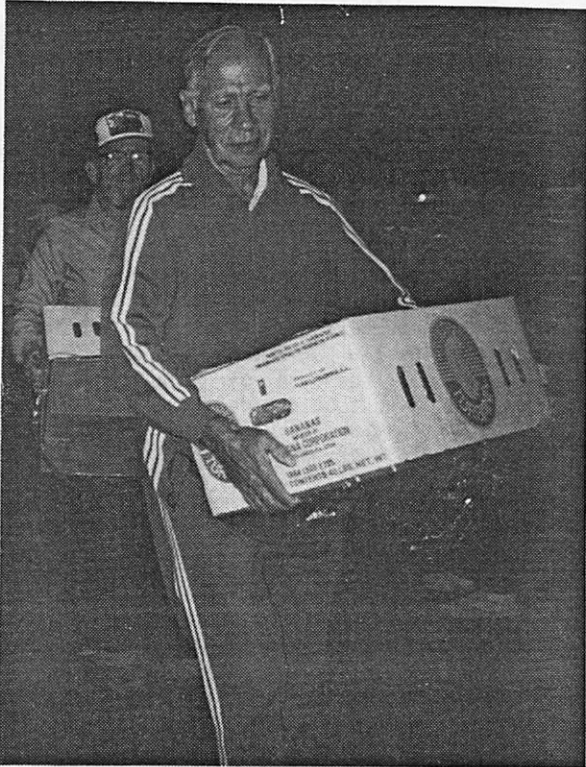
Phyllis Harmon

OCTOBER MEETING - Dick Spriek, owner of BIKES PLUS, member of Arlington Heights Bicycle Club and past president of Chicago Area Bicycle Dealers, gave us a very interesting talk on bicycle shops, services to cyclists: repairs, sells, how to use equipment, bicycle touring. Dick stressed the best time to get your bicycle overhauled is not in late spring and summer when a shop is swamped is business. Bikes Plus schedule repair classes: Beginning - basic repair 3 nights, how to repair; Advance Class - repair your bike, and Wheel Building. These classes give riders better appreciation of their machines. There are many repairs "do it yourselfers" can do; other things they can't. The "total concept" bicycle shop has much to offer bicyclists that the mail order companies can not. However, mail order companies are necessary, too, for many, many towns and rural areas have no bicycle shops at all and have to order by mail.

APPLE CIDER RIDE - Kurt Schoenhoff really knows the roads in and around Hawthorn Woods and he and Kaete are excellent hosts! It was a nasty day, heavily overcast and threatening rain so not too many Wheelmen and Arlington Bicycle Club members turned out but it was a great ride and the socializing and lunch cooked on the Weber grill afterwards was very much enjoyed - but riders didn't stay too long due to the impending rain.



OUR HARMON HUNDRED/25/50/75



Above: Richard Wemstrom, Pres. Bob Meute and Ken Goldman helping his dad, Jerry Goldman.

Left: Saturday night food distribution. George Mathison and Howard Paul. Jim Grant did a great job of food distribution. By 7:30 all food was delivered to Phyllis Harmon's, sorted for 6 sag stops and all picked by 9:30 p.m.!

Left: Pat Marshall's signs were greatly responsible for this being our safest Harmon Hundred yet!

Photos by Phyllis Harmon

Below: Early morning registration: Al Dargiel, Toni Ann Winger, Chet Tobolski and Eve Dargiel.

Wheeling High School had lights on and tables and chairs outside for us by 5:30 a.m.!

YOU ARE VITAL TO THE FUTURE OF INVITATIONALS


DON'T LOSE OUR RIGHTS TO THE ROAD BY IGNORING OUR RESPONSIBILITIES -

- * RIDE NO MORE THAN TWO ABBREAST
- * SINGLE FILE IN TRAFFIC
- * STOP FOR LIGHTS
- * DON'T BLOCK INTERSECTIONS
- * BE OFF THE ROAD WHEN STOPPED

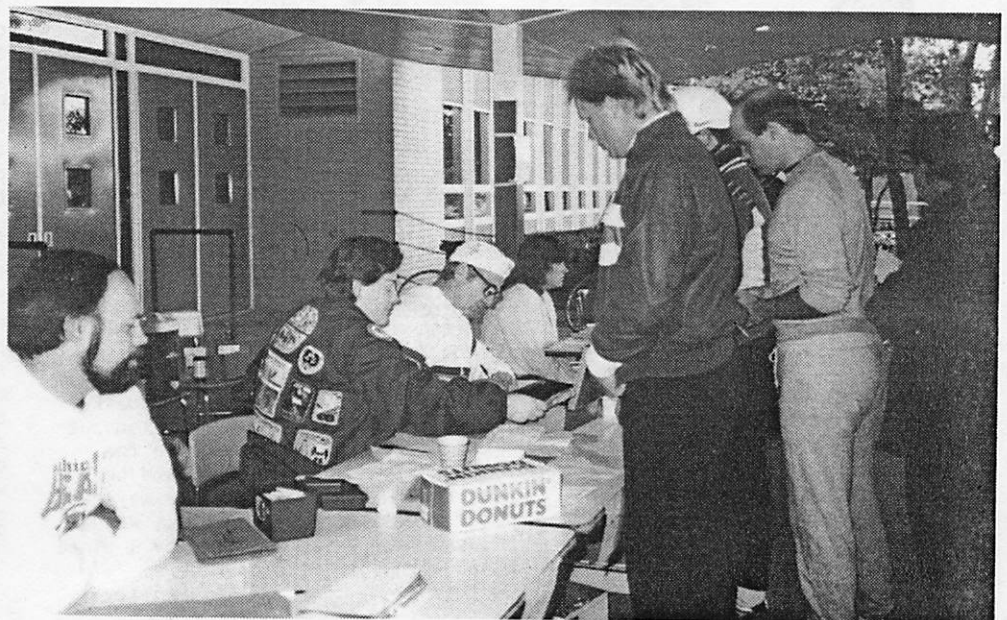
BE SURE TO CHECK IN WHEN YOU RETURN

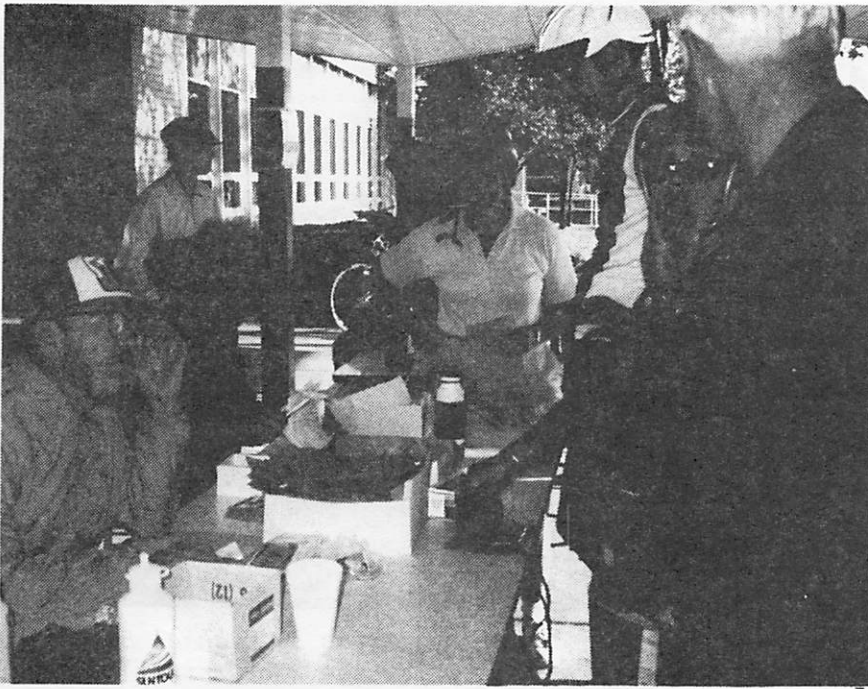
TURN IN \$
RECEIVE PATCH + CERTIFICATE
BICYCLE USA PATCH AVAILABLE \$2.00

FOLLOW THE



ROUTE MARKING





Above: George and Marilyn Mathison checking-in Clark Davoust, Ruby Curtis and Keith Kingbay.

Photos by Phyllis Harmon

Right: CC Cycle maintained and repaired bicycles at both the high school and Cuba Road sag. Bikes Plus was also at the high school and Tony's Schwinn Shop in Woodstock kept bikes running at the lunch stop. In addition Keith Kingbay and Rich Wemstrom repaired bikes on the road: flats, spokes, derailleur.



Treasurer Dick Sorenson rode the Century in the morning and worked Registration-Check-In in the afternoon.

A number of members who worked early or late did, too.



Left: Registration table, checking in riders are: Rich Wemstrom, Joe Tobias, Phillip and Matthew Hursthouse and Toni Ann Winninger.

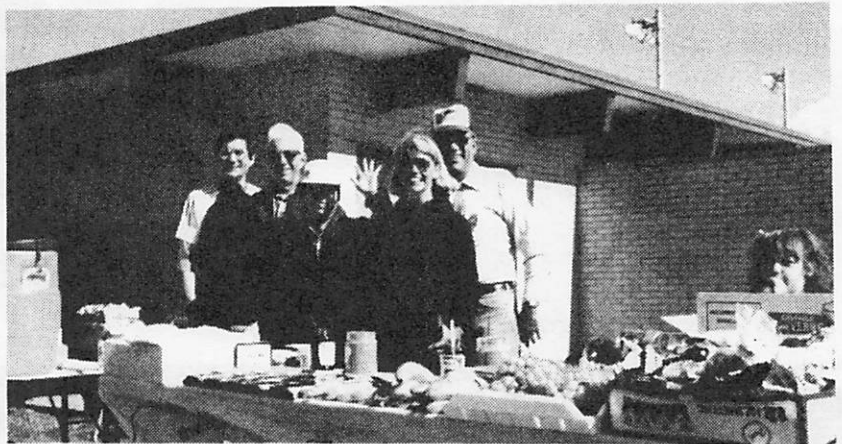


Photo by Bob Browning

Colorful first sag stop at the Wauconda Orchards. Foreground: Sandy Krugman. George and Marilyn and Muffin were a colorful addition for the riders. The water and facilities at the Orchards were very much appreciated by the riders and workers.



Above and below photos by Michael Butcher Woodstock sag/lunch stop for the 525 Century riders. Bill and Eileen Butcher and children Casey, Josh and Peter and Peter's friend, Paul Sefegen. Center are Jack and Lilian Russell, and on the right are Bill Lorenzen and Peter Gianakakis. Below lunch displayed. 750 peanut butter/jelly or banana sandwiches!



Left: Final sag stop on Cuba Road..new location at Old Mill Garden Center at Rand/Cuba Roads. Use of facilities there, too, much appreciated. Shop there and thank them for their cooperation.

Riders enjoying Cuba sag food. Three of workers: Ruth Ryan, Elliott Kanner and Betty Vargas. Pat Marshall had a big committee to serve all 1049 riders!

Photo from Elliott Kanner