



MONTHLY MEANDERS



DECEMBER

Holiday Party

Sat. Dec. 10, 1983



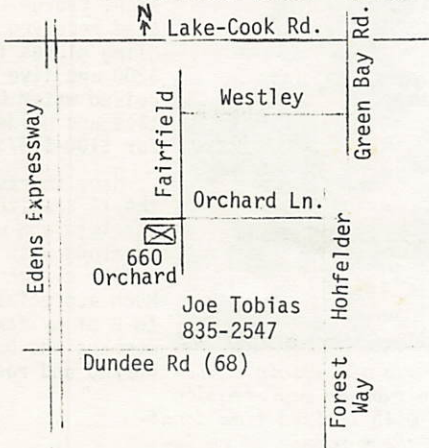
Our hosts this year will be Joe and Lynn Tobias, 660 Orchard Lane, Glencoe.

- 11 a.m. Bike or hike depending on weather.
- 1 p.m. Pot luck lunch and grab bag exchange.

Bring a gift for the grab bag - \$2-\$3 - to join in the fun.

Our meat will be provided, so call Lois Paul at 824-2941, as to what you can bring for pot luck and to let us know you're coming.

L.A.W. Christmas patch - \$1.50

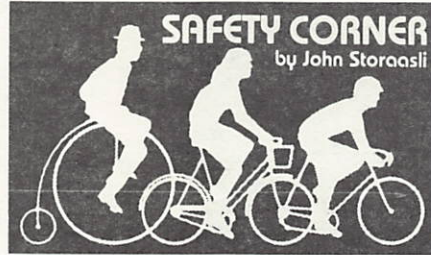


The December Holiday party as well as the New Year's Day ride are both in lieu of monthly meetings, so the next official meeting of the club will be February 2, 1984.

- President: Howard Paul 824-2941
- Vice-Pres: Roger Thauland 541-2294
- Treasurer: Dick Ryan 381-1775
- Safety: John Storaasli 934-0039
- Membership: Pat Marshall 554-0346
- Rec. Secy: Marilyn Mathison 825-5470
- Pool Rides: Marilyn Mathison 825-5470
- Editor: Phyllis Harmon 537-1268

WHEELING WHEELMEN
P. O. Box 581-D,
Wheeling, Illinois 60090

An Affiliate



SAFETY CORNER

by John Storaasli

USE YOUR HEAD! (and protect it, too!)

Whenever I visit a shoe store, I'm told (or reminded) that I have big feet... I just hope that they're big enough to fill the shoes of my predecessor. Thank you, Don Dereby, for your dedicated tenure as Safety Officer.

As an Instructor-In-Training for the L.A.W. Effective Cycling Program, one might think that a regurgitation of assigned lesson plans would be a natural... one might so assume, but one would be quite wrong. At this point in time, our textbook seems to be out of print, so I'm on my own, for better or for worse.

Gloves, helmets, lights, flags, etc., etc. will be discussed in the future, but this month I'd like to continue with what I consider to be the Number 1 priority when riding — **Using your common sense!** As Don observed last month, "... bicycling safety is just common sense..." I sincerely hope that the things I've written about have made safety sense a bit more common than it was before." Without a liberal dose of common sense, all of the suggestions and recommendations which have been presented and which will be presented aren't worth a thing. To put it even more succinctly, **USE YOUR HEAD!**

For instance, you might have the right-of-way at an intersection, but in any dispute between 28 lbs. of bicycle and 2000 lbs. or more of motor vehicle, you know who'll be the winner—so use your head!

Your eyes are a part of your head, so use them. Scan the road in front, behind, and on both sides, (and while you're at it, scan your bike for proper functioning).

Your ears, too, should be used to tell you about your surroundings—obstacles and road hazards ahead, traffic behind, weather signs and, again, the proper (or the improper) functioning of your bike.

Your head (and all of its components... even smell!) is the most important tool you have when riding, so learn to use it! And then, protect it with a helmet. (If you think Don was a fanatic about helmets, you ain't seen nothin' yet!) I won't ride a block without my helmet. I've seen, too often, the debilitating effects of head injuries... mental deficiency, amnesia, paralysis and human vegetables. And if you're not scared yet, I've got more!

Use your head, all of it, and protect it in the process!

On a different note, I'm quite curious as to how many of our Club members use their bike for commuting? Not only who, but how often, how far, and in what weather. In fact, if there's enough interest, I'm seriously thinking about proposing a parallel contest to the Club ride/mileage contest. i.e., daily miles ridden times number of days per week—January 1st through December 31st. Anyone interested? Let me or any of your Club Officers know—A.S.A.P!

The Prez Sez

By most standards we are completing a very successful year. We've had a full rides schedule consisting of many of our favorite routes plus a few new ones, mostly good weather, a record-breaking Harmon Hundred Invitational, and a superb banquet. Perhaps there may be one small dissatisfaction with our record, and that is that we're only getting about 20% participation from our total membership. If we haven't served your needs or interests, we would very much like to hear from you. Give us a call or drop a note in the mail.

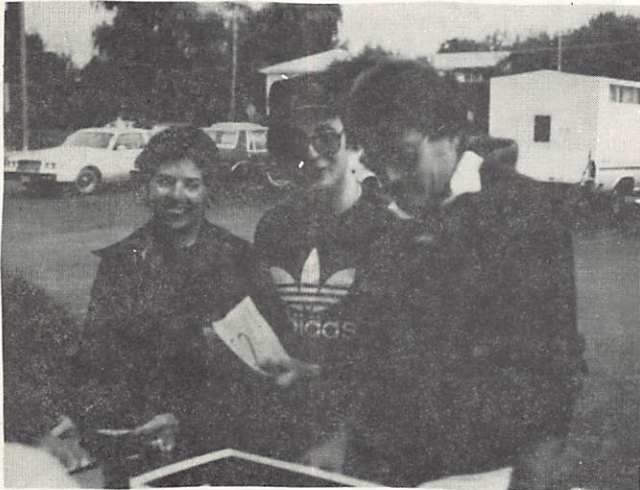
Although our cycling activity will be diminished during the next few months, another activity is heightened - that is the planning of next year's schedule. The Rides Committee - and that consists of everyone willing to help plan the 1984 schedule - will be meeting within the next month or so. Right now is the time to think about routes, destinations, or special activities you'd like to see included. Of course, we hope you will accept some responsibility with the suggestions. As it has always been, our club does not consist of officers and members, but it is an association of cyclists who are willing to take their part in keeping the club an active and interesting part of their lives.

We'll be seeing you at our December Holiday party.

Howard Paul

Chairmen Needed

We need two chairmen for our two invitational events: St. Patrick's Day ride in March and the Harmon Hundred in September. Interested? Call Roger Thauland - 541-2294. Ruth Gaines will work with you and pass on all pertinent information on last year's successful event.



Wheeling President Sheila Schultz pedaled 28-1/2 miles and raised \$330.25. Village Treasurer Greg Peters rode 47-1/2 miles and turned in \$100.00. Village Manager Thomas Markus rolled up 57 miles for \$136.25. More members of the village board plan to ride next year!



Although only 40 riders rode on the first Cycling For Seniors to raise funds for furnishings for the new Senior Center in Wheeling, they raised the surprising total of \$1,977 for a net amount of over \$1,700! And those riders had so much fun they - and the workers - were talking of "next year" before the morning sun had barely risen above the treetops. President Schultz told the Village Board she should have given each of them a page to get filled for sponsors instead of sponsoring a line for her. A number of them, as well as workers, said they didn't know it would be so much fun and planned to ride next year!

Several radio equipped cars of Northwest Suburban REACT manned several of the intersections and when they heard of 756 riders on our Harmon Hundred they enthusiastically volunteered to work with us on that! We had many excellent items donated by bike shops and businesses in the Wheeling area for periodic drawings throughout the day. The Weatherman cooperated by giving us a beautiful warm, bright sunny day.



Wheeling Wheelman Charles Schindler manning the C C Cycle display now owned by his son, David. David set up a good display of cycling clothing and parts and saw to it that bikes were running smoothly and adjusted properly.



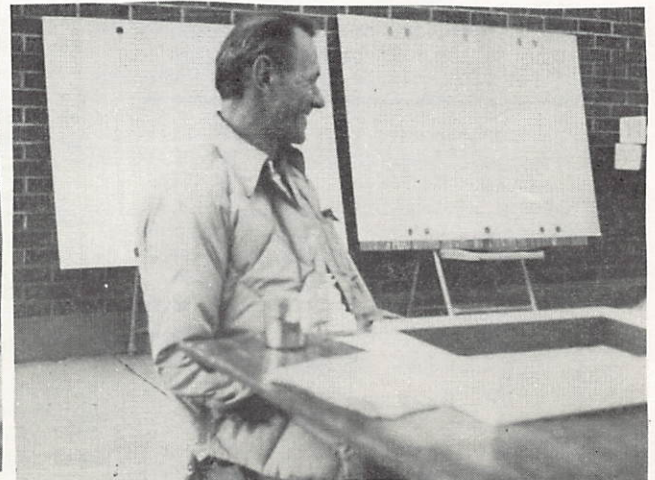
Pat Marshall, our membership chairman, taking her turn at registration table. Members with limited time donated 3 hours at check points or registration table; others rode and worked.

Riders rode for \$10 registration or for pledges. Awards night, Nov. 2, Pres. Sheila Schultz and Robert Bleeker were awarded cycling shorts for raising \$330 each. George Kringstad received cycling gloves for \$200 and five received water bottles and holders for \$100-\$137:

Many thanks to the 14 Wheeling Wheelmen who worked along with 12 senior citizens. Much appreciation to 8 of my family members who both worked and rode.



Wally Pierson of Palos Park pedaled 26-1/2 miles and won the beautiful clock from Anheuser Busch. MS Soc. Ariel Adams felt it only fair to ride with us on this event since we cooperate with her on the annual Le Tour - Wheeling to Wagon Wheel.



Robert Klein manning the registration table. Riders picked up tokens at 3 points along the route to turn in for mileage credit.

Schedule

Dec. 3 DECEMBER RIDE/LUNCH, Wheeling

Sat. 10 a.m. - 25 miles, weather permitting. From Chamber Park Community Center. We'll bike out, have lunch and return.
Elliott Kanner - 541-9176.



Dec. 10 HOLIDAY RIDE - Glencoe

Sat. Annual event - see first page. Bike or hike depending on the weather. From Joe Tobias' home 660 Orchard Lane. 1 p.m. pot luck lunch and social time including grab bag (\$2-\$3). Call Lois Paul, 824-2941, for food suggestions and also to let her know you are coming. This has always been a fun event, don't miss it!



Jan. 1 NEW YEAR'S DAY RIDE/SOCIAL

Sun. 10 a.m. - Bike or hike. Weather and temperature will determine distance. Refreshments and socializing afterwards. Start the New Year right!
Host for the event has not been set - if your home is available at this time, please contact Roger Thauland. Mark the date on your calendar and watch for the January newsletter for the location!



Jan. 4 RIDES COMMITTEE MEETING

Wed. 8 p.m. from Wheeling Community Center, 131 N. Wolf Road, Wheeling. This is the time to plan our 1984 Ride Schedule.. to decide what rides to repeat, what ones to add, and what to omit. Everyone is welcome to offer ideas and suggestion. Also ride leaders need to be slotted in for various events. Roger Thauland - 541-2294

Break Away to Indy 84



L.A.W. NATIONAL RALLY
July 3-8, 1984
Indianapolis, Indiana

During your 5-day stay, you'll have opportunities to ride 500 miles; help celebrate the nation's 208th birthday; ride the famous Indianapolis Speedway track and the world-class Major Taylor Velodrome; visit the world's largest children's museum; attend bicycling workshops and seminars; listen to popular recording artists perform at the outdoor Indianapolis Sports Center; tour historic neighborhoods and the luxurious Indiana countryside. Hosts will be the Central Indiana Bicycling Association (the one responsible for the famous Hilly Hundred in Bloomington, Indiana, every October!). You'll enjoy the Hoosier Hospitality.

Rides Re-ridden



CHAIN-OF-LAKES - About 10 people turned out for this beautiful ride but it was cold and overcast. This year Don Derebey led us on a route through the Chain-Of-Lakes State Park and the sun came out just for a short time while we lunched at noon. The increasing cold and head wind made it a rugged ride on the way back.

CHICAGO LAKE FRONT RIDE - What a perfect day for a ride..comfortably cool, sparkling sunshine, blue, blue Lake Michigan and a traffic-free bike path from Foster Avenue Beach down to the Shedd Aquarium. Phyllis Harmon's grandson, Matthew Hursthouse, had a flat that wouldn't stay patched, so they, and another grandson, Dean Frazier, headed back. The rest went on to the aquarium. A few pedaled to a mile south of McCormick Place before joining the rest for lunch on the surface of the moon (restaurant in the aquarium). It was a pleasant 25-mile ride.

NORTH SHORE GREENERY - About nine riders turned out for this quite cold, vigorous ride. Joe Tobias led us over interesting routes through Lake Forest and college campus off the regular bike routes and gave us some pleasant architectural surprises.

THREE COLLEGE CAMPUS CRUISE - After two prior rainouts we got lucky and rode Don Derebey's new tour. It was a beauty that took us from Wheeling to Lake Forest where we cruised the lake front, had lunch in a college cafeteria and glided through a bike path that only Don knows! The mid-November temperature was in the low 60s, under cloudy skies that only released a few drops as we returned to the starting point. When Don leads this one again - don't miss it!

ANNUAL BANQUET AT HANS BAVARIAN LODGE - Ted and Sherry Uhlemann did an outstanding job in planning this popular event for a record crowd - over 70 people! They had a number of door prizes and awards for the top mileage men and women. The dinner was delicious and the socializing, as usual, a pleasure. We always have to look twice at the many people dressed in their finery--they look quite different dressed in bicycling clothing!

Phil Kahn and Sherie Mosky showed slides and tantalized us with tales of their BIKECENTENNIAL tour in the Canadian Rockies.



1983 WHEELING WHEELMEN MILEAGE/ATTENDANCE AWARDS

The standings are based upon a point system that includes both miles ridden on Wheeling Wheelmen rides and club events attended. Club events include monthly meetings, weekend rides, Wednesday evening rides, and the club's summer tour. Points are figured thus:

Miles X Events
100

MEN	POINTS
Dick Ryan	445
Howard Paul	375
Mike Enwright	274
Peter Gianakakis	248
Elliott Kanner	245
WOMEN	POINTS
Carolyn Kropp	199
Lois Paul	194
Phyllis Harmon	166
Pat Marshall	154
Elida Rech	107

Door County ?

Bob Klein wonders if there is any interest in going up to Door County on a 3-day weekend of biking - or to Devil's Lake area. We could have a motel/camping 3 to 5 days in Door County....Intl. Bicycle Touring Soc. and the Franklin Park Bicycle Club both had five days of biking there. One group based at Fish Creek, the other at Bailey's Harbor.

These are ideas to be brought to the Rides Planning meeting January 4. Also, if you know of any invitational dates of other area clubs, or big events, let us know, too.



MAY THE WINDS ALWAYS BE AT YOUR BACK

Lake County Path

Howard Paul

I attended the Nov. 9 meeting of the Lake County Forest Preserve District in which it was proposed that a path be created near the Des Plaines River, from the Lake-Cook line to the Wisconsin border. It was conceived that this might be used by equestrians, snowmobilers, skiers, hikers, and cyclists. Sue Ulray of the Lake County Bicycle Club and Joe Tobias of our club gave brief addresses to the packed gymnasium on behalf of cyclists, but I'm afraid the viewpoint was lost in the hours' long pleas by other interested groups. These included residents - some of whom want no path but were mostly against use by snowmobiles - by equestrians who want no use by snowmobiles, and by snowmobile clubs who want shared use of the path during snow cover.

The purpose of the meeting was to obtain the opinions of all those concerned and it may be awhile before any decisions are reached. If a multi-use path is created, it would probably be a relatively soft surface and be impractical for cycling. A paved path would be impractical for horses. I don't believe cycling would interfere with other potential activities on the path.

I have no figures to justify the argument, but I do believe that far more cyclists would use an appropriate surface than equestrians. This opinion could be forwarded to the Lake County Board by our club if our membership favors the idea. Please express your opinions to the club during the next few months.

PLAN AHEAD - L.A.W.'s GEAR's will be in June - 2nd weekend at Charlotte, N.C., 3rd weekend at Baltimore, M.D. Both great events, details later.



Bicycle Maintenance Course

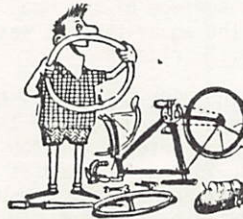
On eight consecutive Tuesdays starting January 17 through March 6, from 7:00 p.m. to 10:00 p.m., there will be a Bicycle Maintenance Course presented at C C Cycle, 307 W. Dundee Rd., Buffalo Grove - 541-1333.

Cost is \$35.00 per person or \$50 per couple (one bike). Sessions will cover:

1. Introduction to Course. Tire inspection and inflation. Changing the rear tire and tube.
2. Overhauling the headset.
3. Overhauling front and rear hubs.
4. Overhaul crank hanger. Clean and examine chain.
5. Clean and adjust derailleur.
6. Rebuild brakes
7. True wheels. Fitting the bicycle to you.
8. Class choice.

Bearings and cables supplied at no additional charge. Helpful tools: 6" crescent wrench, 8, 9, 10 mm open end wrenches.

Please wear suitable clothing, we will be working with grease.



PROGRAM CHAIRMAN

Phil Kahn will serve as Program Chairman for 1984. If you have any suggestions - topics, tours, interesting people, technical info, etc. give him a call at 520-3114.

One suggestion, I heard Marshall Balling, Wheeling Historian, talk last week on Wheeling history--way back to 1833! His anecdotes were fascinating! Ed.

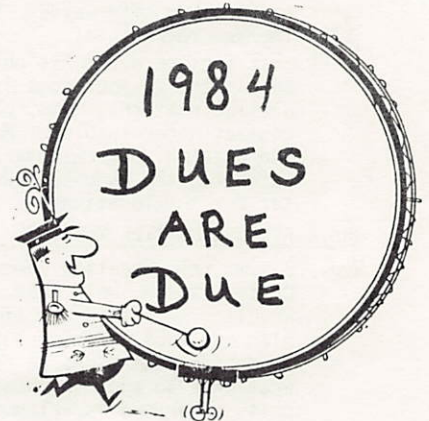
Cross-Country Skiing

Traditionally, when all that white stuff covers the ground and pedaling a bicycle is not practical, members seek alternate activities to keep them in condition and out of their easy chairs, the wheeling Wheelmen have scheduled cross-country skiing.

Deer Grove, Moraine Hills State Park, Harms Woods...there are many excellent areas for this exhilarating activity! Roger Thauland, in planning January, February and perhaps March, is asking for leaders any Saturday or Sunday. Volunteer by calling him at 541-2294 or come to the Rides Committee meeting Jan. 4 at the Community Center.

New Members

Welcome this month to Douglas Naal of Northbrook and Cliff and Liz Mueller of Arlington Heights.



1984 dues will be due next month. An application/renewal form will be enclosed with your January newsletter. Be sure to enclose it with your check so we can have our records up to date. Also, be sure to indicate if you have a League of American Wheelmen membership. If you need a League brochure, contact Phyllis Harmon - 537-1268

Our best known and most photographed member is Muffin, George and Marilyn Mathison's tiny black and tan dog.

They got Muffin from Orphans of the Storm and in no time she took to bike riding like a duck takes to water.

Wherever this threesome goes photographers, TV or newspaper cameras pop up to record this bicycle riding dog. She rides both the tandem and George's recumbent bicycle.

