



# MONTHLY MEANDERS

September, 1983



**SEPTEMBER**  
MEETING  
Wed. Sept. 7 - 8 p.m.  
Chamber Park, 131 N.Wolf

Safety Officer's  
Corner  
by Don  
Derebey



**PROGRAM: WHEELING & DEALING**  
"The 1983 Wheeling Wheelmen Auction"

There'll be some wheeling and dealing at the September 7th Wednesday night meeting. Al Petty, world-famous auctioneer, will be your broker to buy and sell our favorite commodities--bikes, bike parts, and accessories.

**BUYERS:** This is your chance to upgrade your bike's components, get some touring gear, or maybe pick up a new bike.

**SPECTATORS:** This is your chance to laugh at some of the stuff that our members will try to pass off as saleable goods!

**SELLERS:** This is your chance to turn those extra bike items that are cluttering up your garage into extra cash \$\$ to spend on extra bike items! And, unlike other auctions you may have been to, our auctioneer will not take a cut of your profits!!!

**THE RULES:**

- 1) Al hates dirty bike parts, so place any greasy or oily items into a clear plastic bag;
- 2) Label your item with your name, a minimum bid price, if any, a brief description of the item (note if it does not work!), and an estimate of the value when new;
- 3) Bring lots of cash!!

All items will be available for inspection during the refreshment period prior to the auction.

## For Sale

SKID LID HELMET - medium size, like new. Pat Marshall - 564-0346.

By far the most memorable part of the L.A.W. Convention, GEAR-West, in Seattle, Washington, was the actual bike riding. The convention was a good one, but the ferry boat rides, scenery, steep hills, and the five days riding in the mountains left me memories that a Midwesterner only dreams about!

I was particularly impressed with the way the folks handle themselves on the bike paths. It is rare to find them on the wrong side, for instance, while here it is almost expected. Perhaps using the paths all year simply makes the Washingtonians better riders. Whatever the reason, the dangers due to corner cutters, racers, joggers, walkers, roller skaters, etc. seem less of a factor out west.

Here, the fifteen-mile bike path is now complete between the Botanic Gardens and the Devon and Caldwell intersection in Chicago. It is a beautiful ride but all of the dangers listed above abound. Enjoy the

ride but stay alert!

With the many hills and mountains in and around Seattle, it becomes great sport to "fly" on the downhill after a tough climb up. Speeds of 50 mph are not uncommon for some riders on a long down grade. I am chicken on a downhill! I think I would have trouble with potholes, ruts, gravel, wheel shimmy, and blow-outs at speeds over 30 mph and so I brake.

One fellow on the BAMMI (Chicago Lung Chicago to Little Egypt ride) encountered a pothole on a downhill and broke his collarbone. Another fellow spoke to us at a meeting of one of the other area clubs. He was moving at 25 mph on a training ride. His front tire blew, caught in the front fork, locked the wheel, and pitched him over forward. The man was a top Illinois racer but is now a paraplegic. I think about these things at high speeds and hope you will, too. Blow by me on the downhills, if you must - I'll see you on the next long grade up!

## New Members

Welcome this month to four new families and one individual:  
Ed Adison and sons, 228-501  
Des Plaines, 60016  
Cheryl and Dolores Carlson, 289-3629  
Streamwood, 60103  
William and Donna Force, 459-9788  
Buffalo Grove, 60090

Salvatore and Mary Amato,  
Bloomington  
Timothy Olson, 470-9042, Skokie

**New Addresses:**

Dana L. Elsesser, 904 Ridge Square,  
Apt. 302, Elk Grove Village 60007  
437-7047

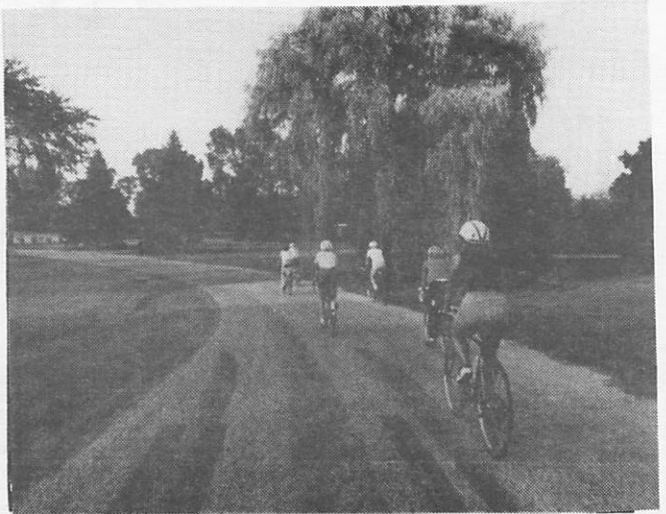
Married June 4 - Congratulations to  
Bob and Marie Liotine Morrell, 60 N.  
Warrington, Des Plaines, 60016  
207-6326

**WHEELING WHEELMEN**  
P. O. Box 581-D,  
Wheeling, Illinois 60090

An  Affiliate

President:	Ted Uhlemann	295-1783
Vice-Pres:	Sherry Uhlemann	295-1783
Treasurer:	Dick Ryan	381-1775
Safety:	Don Derebey	255-3422
Membership:	Pat Marshall	564-0346
Rec.Secy:	Marilyn Mathison	825-5470
Pool Rides:	Marilyn Mathison	825-5470
Editor:	Phyllis Harmon	537-1268

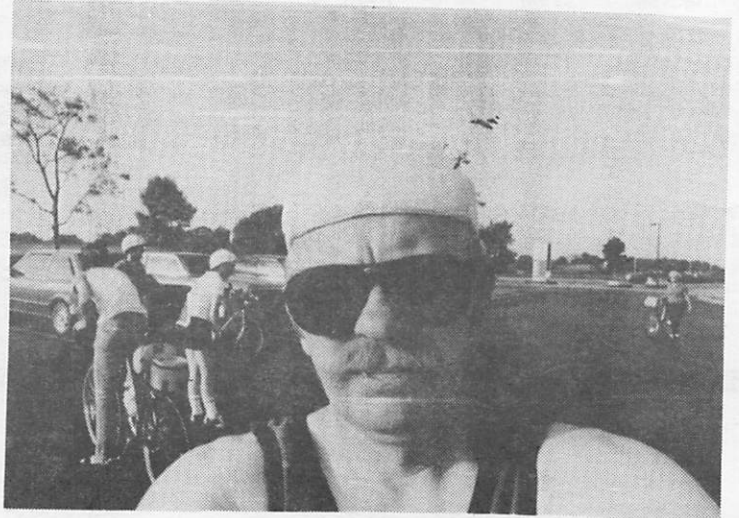
# Photos From Chuck Brenmark —



DICK RYAN LED US ON A BEAUTIFUL RIDE THROUGH INVERNESS



WE SPEND A NIGHT AT THE NORTHBROOK TRACK



THAT QUIET MAN, OUR PHOTOGRAPHER, CHUCK BRENMARK



PHYLLIS HARMON LED US 50 MILES OVER THE RACINE COUNTY BIKE ROUTE





# Schedule

NO WEDNESDAY NIGHT RIDES UNTIL APRIL! THE SUN IS SETTING EARLY THESE DAYS!!

## Sept. 4 W.W. MEMBERS' CENTURY

Sun. Ride the Harmon Hundred/Fifty with the club (we work on our Invitational next week). NOTE: 6:30 a.m. 100 miles moderate pace and 50 miles will start together. 7:30 a.m. 100 miles fast pace. Ruth Gaines ride leader - 541-8064. From Chamber Park Community Center, 131 N. Wolf Rd., Wheeling. Sack lunch or buy on route.



## Sept. 11 HARMON HUNDRED INVITATIONAL

Sun. This is our big event of the year - this time we work instead of ride! If you haven't sent in your work form to Ruth Gaines, phone her at 541-8064. If you can't work, send cookies or brownies. Registration 6 to 9 a.m. from Wickes parking lot, Dundee Rd. west of Wolf Rd.

## Sept. 17 COVERED BRIDGE, Long Grove

Saturday - 10 a.m. 44 miles from Kildeer School. At least two bridges! Bring snacks and lunch. Rick Spitzer - 459-6197.



## Sept. 18 EVANSTON BIKE CLUB CENTURY

Sunday - 6 a.m. - 100 miles from park at 1001 Lincoln and Ridge in Evanston. No charge. Buy lunch along the road. Past O'Hare, Elk Grove Village to Elgin, Shoefactory Rd. to Fox River, Long Grove and back. Dave Tibbetts - 355-4780.



## Sept. 24/25 NEW GLARUS WEEKEND, Wisc.

Sat. rides 8 a.m. and 1 p.m. Sunday 9 a.m. All rides from Sugar River Trail Depot in New Glarus. Patch available. Sat. dinner 7 p.m. at New Glarus Hotel. See adjoining column for registration and motels. Don and Judy Stansfield - 1508 W. Lincoln Blvd., Freeport, IL 61032. 815/235-0075.



## Sept. 25 APPLE CIDER CENTURY, Michigan

25/50/100 - Sunday - Three Oaks River Valley High School. Brian Volstorf - 616/756-3111.

## Oct. 1 KILLER HILL, Long Grove

Saturday - 9:30 a.m. - 60 miles from Kildeer High School. Bring lunch. Glen Schon - 394-2028

## Oct. 2 CYCLING FOR SENIORS, Wheeling

Sunday - Any time between 6 a.m. and 6 p.m. - 9-1/2 miles up to any distance you can go within time span. From Booth Tarkington School, Anthony and Scott St... just west of Schoenbeck behind Carl Sandburg School. You have a choice: \$10 registration, or ride for pledges. See adjoining column for specific details. Phyllis Harmon - 537-1268.



# Cycling For Seniors -

We have co-hosts for this one. The Senior Citizens of Wheeling, the Wheeling Wheelmen and the Village of Wheeling's Senior Citizens Commission are sponsoring this Bike-A-Thon to raise money for furnishings for the Senior Center to be built in Wheeling. The Senior Center will be available to all senior citizens in Wheeling Township.

The route is the same 9-1/2-mile route in Wheeling, Buffalo Grove and Arlington Heights that we used for five years in our Bike-A-Thon for the Heart Association. It is a good biking route within the boundaries of Dundee, Elmhurst, Palatine and Rand Roads, shaped like a cockeyed cloverleaf. You will pick up a token at three points along the route to turn in for credit at the registration desk.

Members can both work and ride for the event. We'll need people to sign in participants, check forms, hand out tokens, etc. Mike Enwright will put arrows on the route.

You have a choice: either you can ride for a flat \$10 registration, or you can ride for pledges. Forms will be at the September meeting and at the bike shops or you can get them from Phyllis Harmon. President Sheila Schultz of Wheeling will challenge the presidents of Buffalo Grove and Prospect Heights to see which can raise the most money. We hope to find dentists challenging dentists, doctors challenging doctors, etc.

I have been sending out close to 200 letters requesting donations to cover overhead or items for drawings to be held throughout the day. A number of items are in already: \$100 bond; \$50 bond, dinner for two at Don Roths, generator set from George Garner; odometer from Bikes Plus; a bike jersey from Alberto's; Atkin-Graber Back Rack #3 from ABC Cyclery; Rear Cannondale seat bag from Buffalo Grove Schwinn; \$25 gift certificates from Eddie Bauer; bowling, golf, lunches, car washes, Skid Lid, etc.

## New Glarus Overnight - Sept. 24-25

Don and Judy Stansfield have been busily planning another delightful weekend for us up in New Glarus area.

Make your own lodging reservation at:

Motel	Single	Two	2 Beds
Town Edge 608/527-2310	18.90	21.00	24.15
Swiss Aire 608/527-2138	23.00	26.00	29.00
Chalet Landhaus 608/527-5234	37.00	42.00	-

Camping fee \$5.00 + \$1.00 daily park user's pass.

October 2 - 6 a.m. to 6 p.m. Booth Tarkington School, Wheeling.

All participants will receive a special Cycling For Seniors patch. In addition, if you ride 100, 62, 50 or 25 miles you will qualify for the L.A.W. Sanctioned Century, Metric Century, Half or Quarter Century patch - \$1.50.



There will be special awards for those who ride for pledges in addition to the special patch and chance for drawings.

Up to \$100 in pledges: Rider will receive the Sanctioned 25/50/62/100 patch.

\$100 to \$199: Water bottle and holder from Buffalo Grove Schwinn

\$200 to \$299: \$16 cycling gloves from George Garner Cyclery, Northbrook

\$300 to \$399: Cannondale Cycling Shorts from Bikes Plus, Arlington Hts.

\$400 to \$499: Skid Lid Helmet from Skid Lid company

\$500 to \$599: Cycling Jersey from ABC Cyclery, Arlington Heights

\$600 and up there are special awards of gift certificates, cyclist's sleeping bag, cyclist's tent etc.

So, mark your calendar. This is a big day for bicyclists - come and join in the fun!

C C CYCLES of Buffalo Grove will handle bicycle repairs for the day.



### NEW GLARUS OVERNIGHT REGISTRATION

Deadling: Sept. 14. Phone \_\_\_/\_\_\_

Name \_\_\_\_\_

Address \_\_\_\_\_

City \_\_\_\_\_ State \_\_\_\_\_ Zip \_\_\_\_\_

Release: I absolve the Wheeling Wheelmen, its officers, the NEW GLARUS OVERNIGHT directors and all other personnel, singly or collectively, of any liability, personal or property, or inconvenience suffered during or after the NEW GLARUS OVERNIGHT.

Signature: \_\_\_\_\_





Tyra Gustavson, seven-year-old, racing at the Northbrook track. She is the daughter of new Wheeling Wheelmen members, Gary and Elaine Gustavson of Northbrook.



I made up this bicyclist with an umbrella several years ago by combining a biker with a Traveler's Insurance umbrella to use on our April newsletter - but I never expected to really see one!

On our Progressive Dinner ride, while riding in the rain on the Ned Browne Bike Trail in Busse Woods, a lady rode towards us out of the woods steering with one hand and holding an umbrella in the other!

Phyllis Harmon



**KINGBAY'S**

EUROPEAN  
BIKE TOUR

\$1,189.00 October 9 to 23, 1983

Includes: Roundtrip air transportation via Icelandair

..Superior Tourist Class Hotels with private bath.

..Private motorcoach for the entire tour.

..All taxes and service charges.

Last chance for reservations. Value Holidays, 2050 West Good Hope Road, Milwaukee, WI 53209. 1-800-558-6850.

35 to 40 miles per day from Luxembourg south into France and follow the Moselle, Rhine and Saar River Valleys. Phyllis Harmon has slides of the area if you want to see them.

## Rides Re-ridden



**LAKE GENEVA** - Dick Ryan led over 25 riders on this ever-beautiful ride to Lake Geneva. This year we enjoyed a swim and ate our picnic lunches on the lawn of Barb Leslie's parents home on the south shore of Lake Geneva.

**HILL & DALE** - Jenny Bruns did an excellent job as Ride Leader for the first time! Everyone took the hills quite well and enjoyed excellent weather. The group lunched at McDonalds in Woodstock before heading back.

**RACINE COUNTY** - Phyllis Harmon led 22 riders on her favorite 50-mile ride in Racine County, Wisconsin. It was warm (as all of August has been) but the group made good time from the Eagle Lake parking area through Waterford and around Wind Lake for lunch at Tichigan Corners. We followed the Racine County bike route most of the way..through Rochester, Honey Lake, into Burlington for a delicious custard stop and back to Eagle Lake.

**TROLLEY WHEELS & HILLS** - Rick Gaines led 25 cyclists out to the Trolley Museum in East Elgin followed with lunch at Dairy Prince and on to tackle the Barrington Hills. There was a cool breeze blowing. Ruth Gaines rode sweep...and, believe it or not, Mike Enwright had three flats!

**MOONLIGHT MADNESS** - This was a special-made-to-order evening for a Bar-B-Q and night ride! Our hosts, Ted and Sherry Uhlemann provided the salads and desserts...we brought the hot dogs, sausage, steaks or chicken. By 8 p.m. we turned on our generators or battery lights and headed out on the Greenbay Trail bike route into Lake Forest, around Lake Forest College, north along Lake Michigan into Lake Bluff and back... all under a full moon!

**PROGRESSIVE DINNER** - What fun! New member Ed Addison said it all, "I spent \$3.00 for one of the most enjoyable dinners I have ever had and tonight I'll spend \$30.00 for a dinner not nearly as good!" We started at Phyllis Harmon's with salad and fruit punch. Then pedaled 22 miles

to Dick and Ardie Sorenson's for a six foot Burrito...mmm! Then to Elida Rech's for a variety of delicious desserts she had baked from midnight to 2:00 a.m.! It rained on the way to Elk Grove and we were mud spattered and wet but the rain felt good after all the heat and Ardie took us in stride and spread towels over chairs and sofa! If there had been prizes awarded, Elida would have won for being "most muddy" and Dick Sorenson would have won second prize! Everyone had so much fun that plans for next year already were being made during the second course!

**LAMB'S FARM** - So what's new? It was hot again but 22 turned out for Bob Lewis to lead us on our annual trek to Lamb's Farm. Phyllis Harmon's son, Phillip Hursthouse, and seven-year-old grandson, Matthew rode with us. Matthew kept pace on his 20" 6-speed Motobecane complete with odometer, water bottle and tool kit!

**AUGUST MEETING** - Work night mailing out Harmon Hundred brochures. Thanks to Elida for typing up the labels, it made the task much easier!

**WEDNESDAY NIGHT RIDES** - A wide variety of miles have been rolled up on these evening rides with all kinds of weather. On the 10th mileage ranged from 2 to 12 miles depending on who turned back because of rain threatening, or who pedaled amidst the lightning! Phyllis Harmon had Lou Sloss to lead us through the meandering roads in Plum Grove for the full mileage.

On the 17th we met at Dan Wright Woods in time for a cloudburst. Dick Ryan, Chuck Brenmark, Elliott Kanner and Phyllis Harmon chatted inside the steamy car until Ted and Sherry pulled up. We waited and waited.. and finally, at 7:20 we raced three miles up St. Mary's Road and three miles back, just before they closed the park for the night!

To make up for previous weather, the Weatherman gave us a perfect night the next week and Al Petty led us 15 miles over Rt. 22, Cuba Road and Long Grove Road with a few "new" roads tossed in for added pleasure!

## ELECTIONS

IT'S THAT TIME AGAIN...

The Nominating Committee will be busy slotting in names on the ballot for the late October election. New officers take over at the November Banquet. You get out of an organization what you put into it...so what do you like to do?